

Sliding Door Systems : 08



inspiration:quality

Exclusive design, but at the same time maximum functionality of our products are key to what we do, to ensure that we create a lasting impression with you - our customers.

Our product portfolio ranges from sliding hardware for glass and wooden doors to door handles, and from shower fittings all the way to library ladders and table frames. We combine our materials seamlessly with leather and wood. In this way you can add specific, individual highlights to your interior design.

Despite our main focus on stainless steel, we also work with brass or aluminium. Our production stands out by detailed, individual processing through turning, milling, stamping, pressing and pipe machining, ensuring a consistent and high product quality.

Since 1995, our family owned company based in Bruchsal is committed to the development and production of hardware.

Please share our enthusiasm for **inspiration:quality**

Andreas Beyerle,
Owner of ABP-Beyerle GmbH



Contents

■ Sliding door systems, stainless steel, solid	
Sliding door sets, track rail, solid	Page 10 – 21
Trolley	Page 22 – 23
Track rails	Page 24
Accessories: coupling, wall mount, spacers, glass/ceiling fixture, door stoppers, etc.	Page 25 – 30
■ Sliding door systems, stainless steel, Econoline (tubular)	
Overview	Page 32
Sliding door-sets, tubular, satin and polished	Page 33 – 37
Trolley / track rails, tubular	Page 38 – 39
Accessories: coupling, wall mount, spacers, glass/ceiling fixture, door stoppers, etc.	Page 40 – 45
■ Glass connecting systems	Page 46 – 47
■ Flat Track system Runway	Page 48
Accessories: track rails, trolleys, wall brackets, etc.	Page 49
■ Sliding door systems for shower cabinets	Page 50 – 57
■ Base bottom roller systems	Page 58 – 72
■ Sliding Door Systems Aluminium	
AS50 glass	Page 74
AS50 wood	Page 75
Profile rails	Page 76
Parts of AS50	Page 77
■ Profiles for slidelights, partition walls, etc. (extract)	Page 78
■ Corner locks, latch	Page 79
■ Pull handles (extract)	Page 80 – 81
■ Lockable pull handles (extract)	Page 82 – 83
■ Flush pulls (extract)	Page 84 – 85

Legend:



+/- Height adjustable.



Bottom rolls with height adjustment (only up).



These sliding doors are certified by Prüfinstitut ift (Rosenheim)



Upgrade by Soft Tec dampers.

home jewels®
Designer fittings

Our sliding door systems are characterised by their particularly smooth and safe movement. We also offer the corresponding door dampers for both stainless steel systems and aluminium systems, in order to increase the functionality of our sliding door systems. The varying versions of our patented Soft-Tec door damper are suitable for damping the door panel and are additionally equipped with a stop assistant to catch the door panel.

Soft-Tec



Soft-Close mechanism

For bas bottom roller systems, you receive Soft-Close Mechanism that can be customised to different door panel weights.



Soft-Close Mechanism is also available for our aluminium system AS50. The dampers are fitted with a short damping path to optimize the relation between the profile lengths and the door passage widths. Stop-pers gently catch the door at any desired stopping point. However, customers who want even more security may achieve additional suspension with our Soft-Tec system.



Runway



This Flat Track System is characterized by a clear stylistic language. Its plain lines harmonize especially well with the stainless steel material.

Full Moon



A bottom roll in its classic design - a round highlight for glass and wooden doors.



Q-Box



An optical paradox: a rolling square. For everybody who likes the extraordinary.



Certificate from ift Rosenheim

Sliding door fittings in accordance with EN 1527 : 2013

The testing institute **ift Rosenheim** has successfully tested our ABP-Beyerle sliding door systems for glass or wooden doors. Systems with certificates include:

Flatec I, Flatec II, Unotec Home, Tritec, Antra I, Antra II, Flatec V, Duetec, Flatec IV, Silent Glam, Belans.



1. Top Hung Systems (~ 22 N):

Solid Track:

Flatec I, Flatec II, Unotec Home, Duetec, Tritec among others.

Hollow Track:

Flatec IV (Slick 1), Flatec V (Slick 2), Antra I, Antra II, Project (Slick 3) among others.

2. Base Bottom Roller System (~ 3 N):

Silent Glam, Belans

Position 2: Durability 100,000 cycles

Position 3: Door mass

Top Hung 100 kg

Duetec 60 kg

Bottom Roller 150 kg

Position 6: Corrosion resistance

240 h (salt spray test according to EN 1670)

Position 9: Initial friction (effective results)

Top Hung 100 kg

in average 22 N

Bottom Roller 150 kg

in average 3 N

Hardware for sliding doors and folding doors in accordance with the European Standard EN 1527 : 2013

Classification, 9 digits codes

Position	1. Category of use	2. Durability	3. Door weight	4. Fire resistance	5. Safety	6. Corrosion- resistance	7. Security	8. Category of door	9. Initial- friction
Top Hung Systems	-/-	6	2	0	-/-	4	-/-	1	3
Bottom Roller Systems	-/-	6	3	0	-/-	4	-/-	1	3
Explanation for classification									
Top Hung Systems	no grade identified	100,000 cycles	220 lbs (100 Kg) Duetec 132 lbs (60 Kg)	not approved for use on fire door assemblies	no grade identified	corrosion resistant acc. EN1670 (please see comment)	no grade identified	sliding door	less than 40N, (please see effective results)
Bottom Roller Systems			330 lbs (150 kg)						

Model, program, technical modifications, information and errors are exempted. The right to make design or specification changes is reserved at any time.

Timeless elegant



Sliding door trolleys for glass doors, for solid track rail



Flatec I
Page 10



Unotec Home
Page 11



Tritec
Page 12



Antra I
Page 13

Sliding door trolleys for wooden doors, for solid track rail



Flatec I
Page 14



Flatec II
Page 15



Unotec Home
Page 16



Tritec
Page 17



Antra I
Page 18



Antra II
Page 19

Designer trolleys, for solid track rail



Shield Glass
Page 20



Duetec glass
Page 22 + 23



Shield wood
Page 20



Skater wood
Page 21

Sliding Door Systems

Sliding door systems for glass and wooden door panels, stainless steel, for solid track rail

Name	loading capacity	Soft-Tec damper Soft-Close damper	Testet acc. to EN 1527:2013	height adjustment	Page
Flatec, glass	100 kg	yes	yes	yes	10
Unotec Home, glass	100 kg	yes	yes	no	11
Tritec, glass	100 kg	yes	yes	yes	12
Antra I, glass (tubular)	100 kg	no	yes	yes	13
Flatec I, wood	100 kg	yes	yes	yes	14
Flatec II, wood	100 kg	yes	yes	no	15
Unotec Home, wood	100 kg	yes	yes	no	16
Tritec, wood	100 kg	yes	yes	yes	17
Antra I, wood (tubular)	100 kg	no	yes	yes	18
Antra II, wood (tubular)	100 kg	no	yes	no	19

Designer sliding sets for glass and wooden door panels, stainless steel, for solid track rail

Shield glass / wood	100 kg	no	no	yes	20
Skater, wood	100 kg	no	no	no	21
Duetec, glass	60 kg	no	no	yes	22 + 23

Sliding door systems for glass and wooden door panels, stainless steel, for tubular track rail

Project, glass / wood	100 kg	no	yes	no	33
Flatec IV	100 kg	no	yes	yes	34
Flatec IV, polished	100 kg	no	yes	yes	35
Flatec V	100 kg	no	yes	no	36
Torole	60 kg	no	no	yes	37

Flat Track Systems, for glass and wooden door panels, stainless steel

Runway	80 kg	no	no	yes	48
--------	-------	----	----	-----	----

Base bottom rolls for glass and wooden door panels, stainless steel, Soft-Close Mechanism

Silent Glam	150 kg	yes	yes	yes	59 + 65
Belans	150 kg	yes	yes	yes	61
Deeply Move	80 kg	yes	no	no	62
Full Moon	150 kg	yes	no	yes	63
Q-Box	150 kg	yes	no	yes	64

Sliding Systems Aluminium

AS50, glass	≤50 kg	yes	no	yes	74
AS50, wood	≤50 kg	yes	no	yes	75



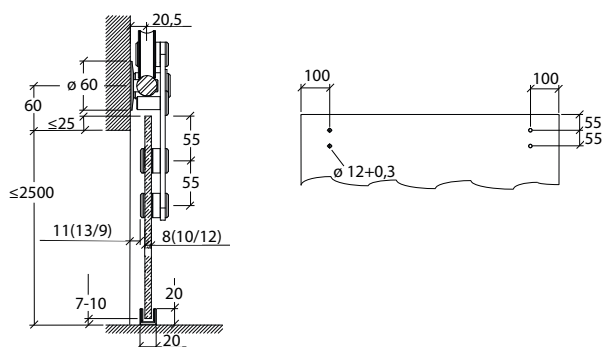
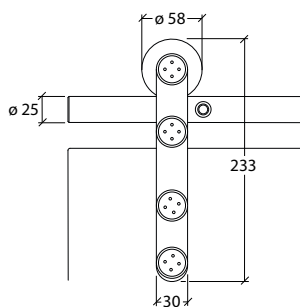
Trolley Flatec I for glass door panel

Complete sets, standard model, $t = 8 - 12 \text{ mm}$
adjustable height, approx. $\pm 3,5 \text{ mm}$
consisting of:

- 1 track rail, solid stainless steel, $\varnothing 25 \text{ mm}$, USO200EF
length: see table
- 3 - 4 wall attachments, stainless steel, USO210EF,
with hanger bolts $M 8 \times 70 \text{ mm}$
- 2 trolleys Flatec I, glass, stainless steel, USO120DS-EF
- 2 door stoppers, stainless steel, 110.00192
- 1 bottom guide, stainless steel, USO260EF
- 1 special tool for decorative screws, Z923
- 1 installation instruction

Set numbers	track rail length mm	passage width mm
110.00113	1800	750 - 900
110.00114	2100	910 - 1000
110.00115	2300	1010 - 1120
110.00116	2540	1130 - 1250

- ▼ Glass drill holes, $\varnothing 12 \text{ mm} + 0,3 \text{ mm}$
Maximum door weight 100 kg
For baseboards and trimmings, order spacer (stainless steel, USO226-19EF) separately for each wall attachment.
Please find planning guides and installation instruction at www.abp-beyerle.de
 - + For special lengths of track rails, other individual components and accessories refer to page 22
- Tested according to EN 1527 : 2013





Trolley Unotec Home for glass door panel

Complete sets, standard model, $t = 8 - 12 \text{ mm}$
consisting of:

- 1 track rail, solid stainless steel, $\varnothing 25 \text{ mm}$, USO200EF
length: see table
- 3-4 wall attachments, stainless steel, USO210EF,
with hanger bolts $M8 \times 70 \text{ mm}$
- 2 trolleys Unotec Home, glass, stainless steel, USH100DS-EF
- 2 door stoppers, stainless steel, USO290EF
- 1 bottom guide, stainless steel, USO260EF
- 1 special tool for decorative screws, Z923
- 1 installation instruction

Set numbers	track rail length mm	passage width mm
110.00117	1800	750 - 900
110.00118	2100	910 - 1000
110.00119	2300	1010 - 1120
110.00120	2540	1130 - 1250

▼ Glass drill holes 12 mm

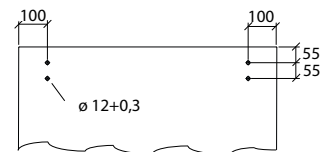
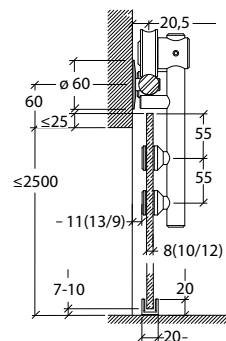
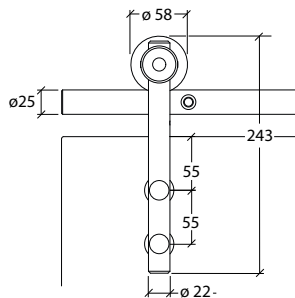
Maximum door weight 100 kg

For baseboards and trimmings, order spacer (stainless steel, USO226-19EF) separately for each wall attachment.

Please find planning guides and installation instruction at www.abp-beyerle.de

- + For special lengths of track rails, other individual components and accessories refer to page 22

Tested according to EN 1527 : 2013





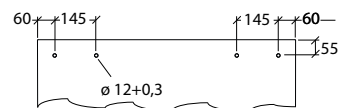
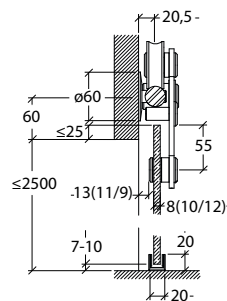
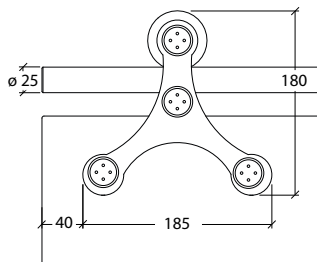
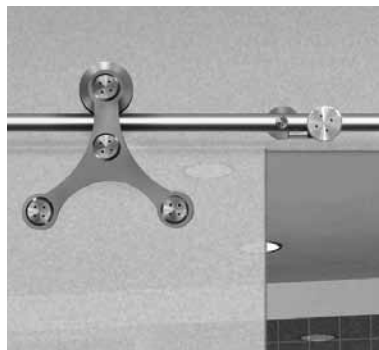
Trolley Tritec for glass door panel

Complete sets, standard model, $t = 8 - 12 \text{ mm}$
adjustable height, approx. $\pm 3,5 \text{ mm}$
consisting of:

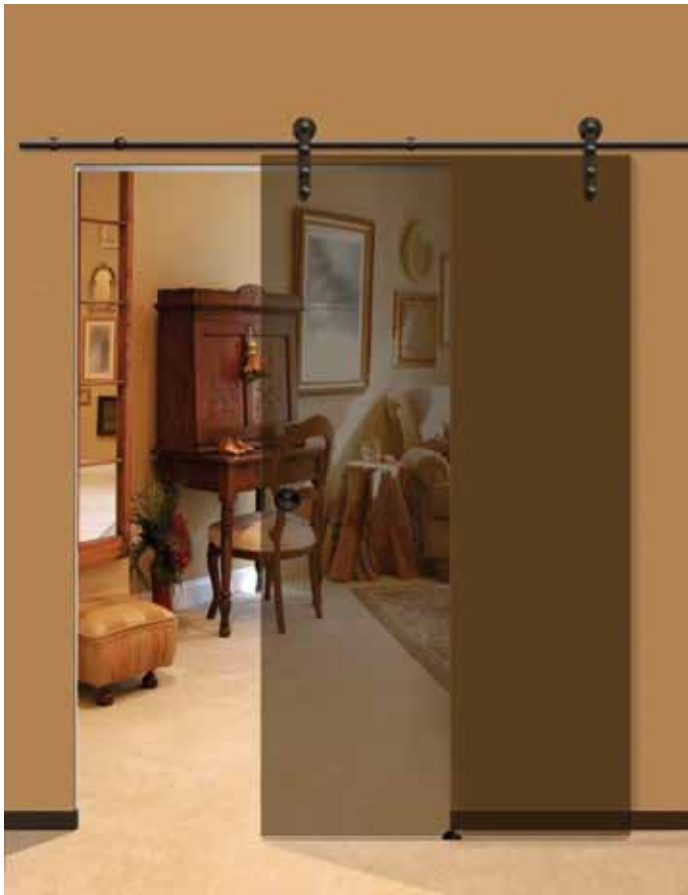
- 1 track rail, solid stainless steel, $\varnothing 25 \text{ mm}$, USO200EF
length: see table
- 3 - 4 wall attachments, stainless steel, USO210EF,
with hanger bolts $M8 \times 70 \text{ mm}$
- 2 trolleys Tritec, glass, stainless steel, USO122DS-EF
- 2 door stoppers, stainless steel, USO290EF
- 1 bottom guide, stainless steel, USO260EF
- 1 special tool for decorative screws, Z923
- 1 installation instruction

Set numbers	track rail length mm	passage width mm
110.00121	1800	750 - 900
110.00122	2100	910 - 1000
110.00123	2300	1010 - 1120
110.00124	2540	1130 - 1250

- ▼ Glass drill holes $\varnothing 12 \text{ mm} + 0,3 \text{ mm}$
Maximum door weight 100 kg
For baseboards and trimmings, order spacer (stainless steel, USO226-19EF) separately for each wall attachment.
Please find planning guides and installation instruction at www.abp-beyerle.de
- + For special lengths of track rails, other individual components and accessories refer to page 22
Tested according to EN 1527 : 2013



Antra I



Trolley Antra I for glass door panel

Complete sets, standard model, $t = 8 - 12$ mm
adjustable height, approx. $\pm 3,5$ mm, consisting of:

- 1 track rail, stainless steel - dark bronze, $\varnothing 25$ mm, USO200DB
length: see table
- 3 - 4 wall attachments, stainless steel - dark bronze, USO212DB,
with hanger bolts $M 8 \times 70$ mm
- 2 trolleys Antra I glass, stainless steel - dark bronze, USO126DB
- 2 door stoppers, stainless steel - dark bronze, USO254DB
- 1 bottom guide, stainless steel - dark bronze, USO260DB
- 1 Allen key (SW5), Z926
- 1 installation instruction

Set numbers	track rail length mm	passage width mm
USO46-1800DB	1800	750 - 900
USO46-2100DB	2100	910 - 1000
USO46-2300DB	2300	1010 - 1120
USO46-2540DB	2540	1130 - 1250

▼ Glass drill holes $\varnothing 13$ mm $\pm 0,3$ mm

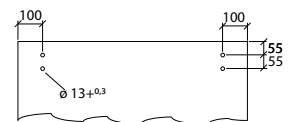
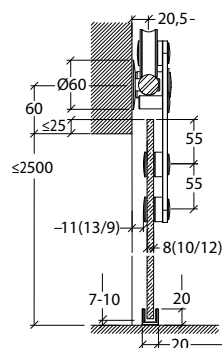
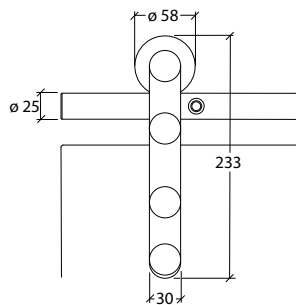
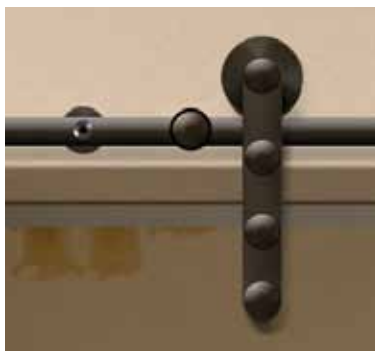
Maximum door weight 100 kg

For baseboards and trimmings, order spacer,
(USO226-19DB) separately for each wall attachment.

Please find planning guides and installation instruction
at www.abp-beyerle.de

+ For special lengths of track rails, other individual components and accessories refer to page ???

Tested according to EN 1527 : 1998



■ Flatec I



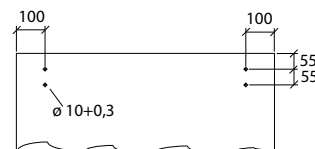
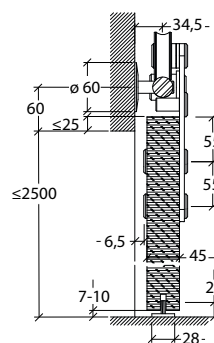
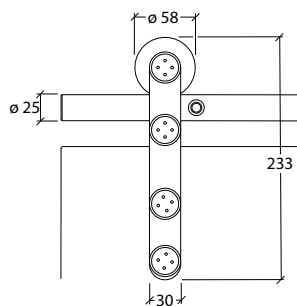
Trolley Flatec 1 for wooden door panel

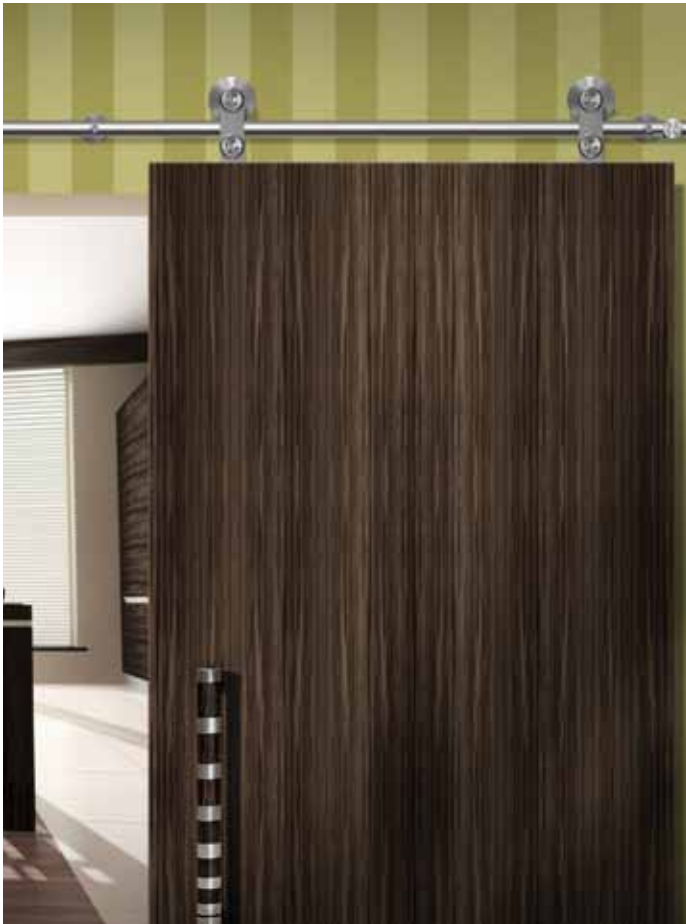
Complete sets, standard model, $t = 38 - 45$ mm
adjustable height, approx. $\pm 3,5$ mm
consisting of:

- 1 track rail, solid stainless steel, $\varnothing 25$ mm, USO200EF
length: see table
- 3 - 4 wall attachments, stainless steel, USO215EF,
with hanger bolts $M8 \times 90$ mm
- 2 trolleys Flatec I wood, stainless steel, USO121DS-EF
- 2 door stoppers, stainless steel, 110.00192
- 1 bottom guide, plastic, USH268K
- 1 special tool for decorative screws, Z923
- 1 installation instruction

Set numbers	track rail length mm	passage width mm
110.00125	1800	750 - 900
110.00126	2100	910 - 1000
110.00127	2300	1010 - 1120
110.00128	2540	1130 - 1250

- ▼ Wood drill holes $\varnothing 10$ mm $\pm 0,3$ mm
Maximum door weight 100 kg
For baseboards and trimmings, order spacer (stainless steel, USO226-19EF) separately for each wall attachment.
Please find planning guides and installation instruction at www.abp-beyerle.de
- + For special lengths of track rails, other individual components and accessories refer to page 22
Tested according to EN 1527 : 2013





Trolley Flatec II for wooden door panel

Complete sets, standard model, t = 38 - 45 mm
consisting of:

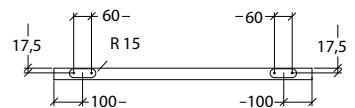
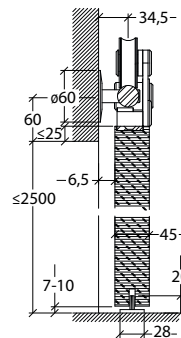
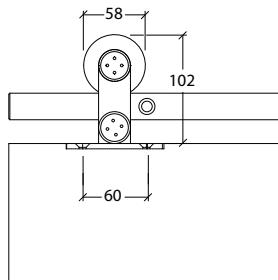
- 1 track rail, solid stainless steel, ø 25 mm, USO200EF
- length: see table
- 3-4 wall attachments, stainless steel, USO215EF,
- with hanger bolts M8 x 90 mm
- 2 trolleys Flatec II wood, stainless steel, USO130DS-EF
- 2 door stoppers, stainless steel, USO110.00192
- 1 bottom guide, plastic, USH268K
- 1 special tool for decorative screws, Z923
- 1 installation instruction

Set numbers	track rail length mm	passage width mm
110.00129	1800	750 - 900
110.00130	2100	910 -1000
110.00131	2300	1010 -1120
110.00132	2540	1130 -1250

▼ Maximum door weight 100 kg

For baseboards and trimmings, order spacer (stainless steel, USO226-19EF) separately for each wall attachment. Please find planning guides and installation instruction at www.abp-beyerle.de

- + For special lengths of track rails, other individual components and accessories refer to page 22
Tested according to DIN EN 1527 : 2013





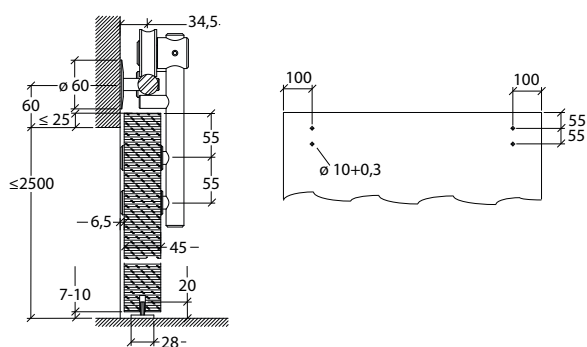
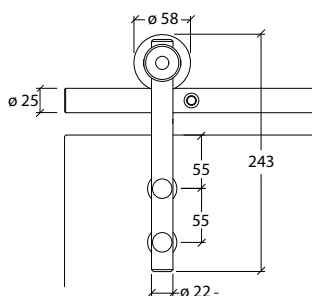
Trolley Unotec Home for wooden door panel

Complete sets, standard model, $t = 38 - 45$ mm
consisting of:

- 1 track rail, solid stainless steel, $\varnothing 25$ mm, USO200EF
length: see table
- 3 - 4 wall attachments, stainless steel, USO215EF,
with hanger bolts $M8 \times 90$ mm
- 2 trolleys Unotec Home, wood, stainless steel, USH105DS-EF
- 2 door stoppers, stainless steel, USO290EF
- 1 bottom guide, plastic, USH268K
- 1 special tool for decorative screws, Z923
- 1 installation instruction

Set numbers	track rail length mm	passage width mm
110.00133	1800	750 - 900
110.00134	2100	910 - 1000
110.00135	2300	1010 - 1120
110.00136	2540	1130 - 1250

- ▼ Wood drill holes $\varnothing 10$ mm + 0,3 mm
Maximum door weight 100 kg
For baseboards and trimmings, order spacer (stainless steel, USO226-19EF) separately for each wall attachment.
Please find planning guides and installation instruction at www.abp-beyerle.de
- + For special lengths of track rails, other individual components and accessories refer to page 22
Tested according to EN 1527 : 2013





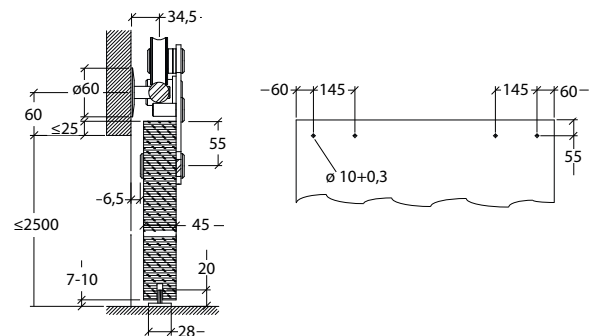
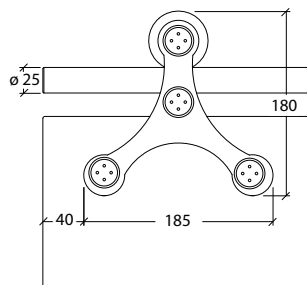
Trolley Tritec for wooden door panel

Complete sets, standard model, $t = 38 - 45$ mm
adjustable height, approx. $\pm 3,5$ mm
consisting of:

- 1 track rail, solid stainless steel, $\varnothing 25$ mm, USO200EF
length: see table
- 3 - 4 wall attachments, stainless steel, USO215EF,
with hanger bolts $M8 \times 90$ mm
- 2 trolleys Tritec wood, stainless steel, USO123DS-EF
- 2 door stoppers, stainless steel, USO290EF
- 1 bottom guide, plastic, USH268K
- 1 special tool for decorative screws, Z923
- 1 installation instruction

Set numbers	track rail length mm	passage width mm
110.00137	1800	750 - 900
110.00138	2100	910 - 1000
110.00139	2300	1010 - 1120
110.00140	2540	1130 - 1250

- ▼ Wood drill holes $\varnothing 10$ mm $\pm 0,3$ mm
Maximum door weight 100 kg
For baseboards and trimmings, order spacer (stainless steel, USO226-19EF) separately for each wall attachment.
Please find planning guides and installation instruction at www.abp-beyerle.de
- + For special lengths of track rails, other individual components and accessories refer to page 22
Tested according to EN 1527 : 2013



Antra I



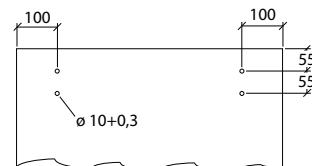
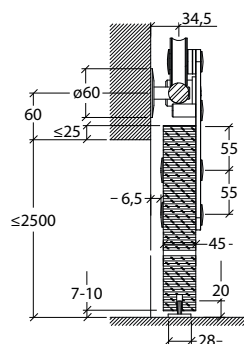
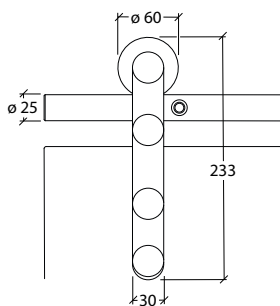
Trolley Antra I for wooden door panel

Complete sets, standard model, $t = 38 - 45$ mm
adjustable height, approx. $\pm 3,5$ mm
consisting of:

- 1 track rail, tubular type, stainless steel - dark bronze, $\varnothing 25$ mm, USO200DB, length: see table
- 3 - 4 wall attachments, stainless steel - dark bronze, USO214DB, with hanger bolts $M8 \times 90$ mm
- 2 trolleys Antra I wood, stainless steel - dark bronze, USO129DB
- 2 door stoppers, stainless steel - dark bronze, USO254DB
- 1 bottom guide, plastic, USH268K
- 1 Allen key (SW5), Z926
- 1 installation instruction

Set numbers	track rail length mm	passage width mm
USO47 - 1800DB	1800	750 - 900
USO47 - 2100DB	2100	910 - 1000
USO47 - 2300DB	2300	1010 - 1120
USO47 - 2540DB	2540	1130 - 1250

- ▼ Wood drill holes $\varnothing 10$ mm $\pm 0,3$ mm
Maximum door weight 100 kg
For baseboards and trimmings, order spacer, (USO226 - 19DB) separately for each wall attachment.
Please find planning guides and installation instruction at www.abp-beyerle.de
- + For special lengths of track rails, other individual components and accessories refer to page 22
Tested according to EN 1527 : 2013



Antra II



Trolley Antra II for wooden door panel

Complete sets, standard model, $t = 36 - 45$ mm
consisting of:

- 1 track rail, tubular type, stainless steel - dark bronze, $\varnothing 25$ mm, USO200DB, length: see table
- 3 - 4 wall attachments, stainless steel - dark bronze, USO214DB, with hanger bolts M8 x 90 mm
- 2 trolleys Antra II wood, stainless steel - dark bronze, USO131DB
- 2 door stoppers, stainless steel - dark bronze, USO254DB
- 1 bottom guide, plastic, USH268K
- 1 Allen key (SW5), Z926
- 1 installation instruction

Set numbers	track rail length mm	passage width mm
USO56-1800DB	1800	750 - 900
USO56-2100DB	2100	910 - 1000
USO56-2300DB	2300	1010 - 1120
USO56-2540DB	2540	1130 - 1250

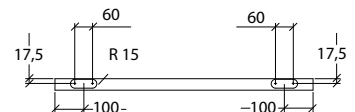
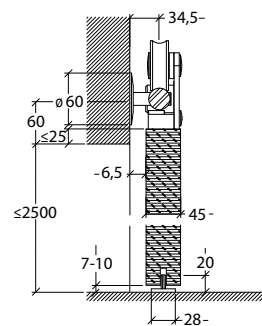
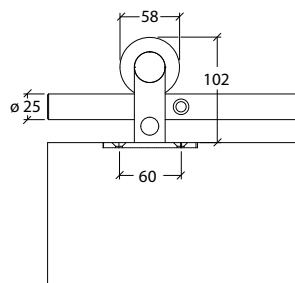
▼ Maximum door weight 100 kg

For baseboards and trimmings, order spacer, (USO226-19DB) separately for each wall attachment.

Please find planning guides and installation instruction at www.abp-beyerle.de

+ For special lengths of track rails, other individual components and accessories refer to page 22

Tested according to EN 1527 : 2013



Shield



home jewels®



Trolley Shield for glass and wooden door panel

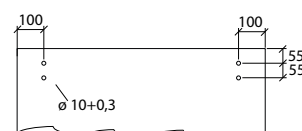
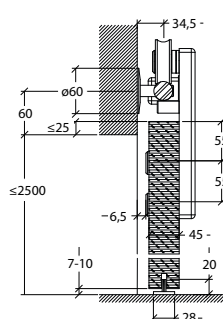
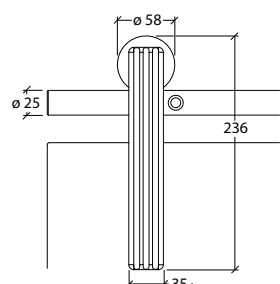
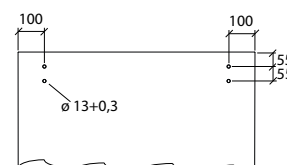
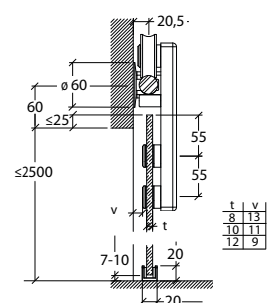
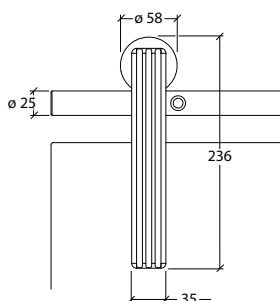
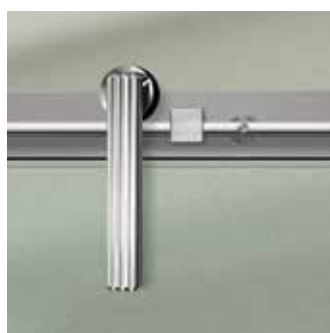
Complete sets, adjustable height, approx. $\pm 3,5$ mm
 standard model for glass doors $t = 8 - 12$ mm
 standard model for wooden doors $t = 38 - 45$ mm
 consisting of:

- 1 track rail, solid stainless steel, $\varnothing 25$ mm, USO200EF
 length: see table
- 3-4 wall attachments, stainless steel,
 USO212EF glass with hanger bolts M8 x 70 mm
 USO214EF wood with hanger bolts M8 x 90 mm
- 2 trolleys Shield, stainless steel,
 USO140EF glass with cover, USO141EF wood
- 2 door stoppers, stainless steel, USO252EO
- 1 bottom guide, stainless steel, USO260EF glass
 1 bottom guide, plastic, USH268K wood
- 1 Allen key (SW5), Z926, 1 installation instruction

Glass set	track rail length	passage width
Set numbers	mm	mm
USO90-1800EF	1800	750 - 900
USO90-2100EF	2100	910 - 1000
USO90-2300EF	2300	1010 - 1120
USO90-2540EF	2540	1130 - 1250

Wood set	track rail length	passage width
Set numbers	mm	mm
USO91-1800EF	1800	750 - 900
USO91-2100EF	2100	910 - 1000
USO91-2300EF	2300	1010 - 1120
USO91-2540EF	2540	1130 - 1250

- ▼ Glass drill holes $\varnothing 13$ mm $\pm 0,3$ mm
- ▼ Wood drill holes $\varnothing 10$ mm $\pm 0,3$ mm
 Maximum door weight 100 kg
 For baseboards and trimmings, order spacer (stainless steel, USO226-19EF) separately for each wall attachment.
 Please find planning guides and installation instruction at www.abp-beyerle.de
- + For special lengths of track rails, other individual components and accessories, refer to page 22



Skater



Trolley Skater for wooden door panel

Complete sets, standard model, $t = 38 - 45 \text{ mm}$
consisting of:

- 1 track rail, solid stainless steel, $\varnothing 25 \text{ mm}$, USO200EF
length: see table
- 3-4 wall attachments, stainless steel, USO214EF,
with hanger bolts $M8 \times 90 \text{ mm}$
- 2 trolleys Skater, wood, stainless steel, USO150EF-B
- 2 door stoppers, stainless steel, USO253EF
- 1 bottom guide, plastic, USH268K
- 1 Allen key (SW5), Z926,
- 1 installation instruction

Set numbers	track rail length mm	passage width mm
USO92-1800EF	1800	750 - 900
USO92-2100EF	2100	910 - 1000
USO92-2300EF	2300	1010 - 1120
USO92-2540EF	2540	1130 - 1250

▼ Wood drill holes $\varnothing 10 \text{ mm} + 0,3 \text{ mm}$

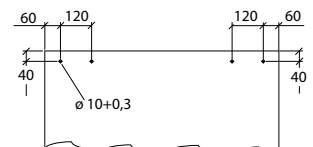
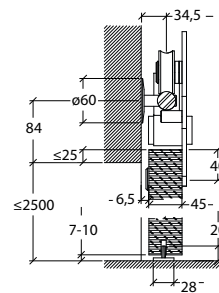
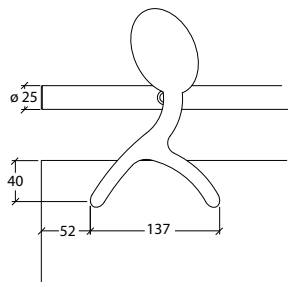
Maximum door weight 100 kg

For baseboards and trimmings, order spacer (stainless steel, USO226-19EF) separately for each wall attachment.

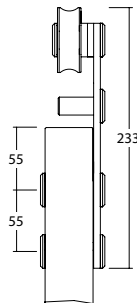
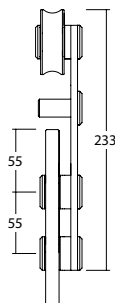
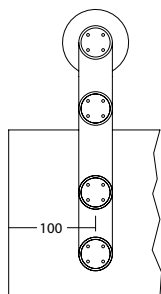
Please find planning guides and installation instruction at www.abp-beyerle.de

- + For special lengths of track rails, other individual components and accessories refer to page 22

home jewels®

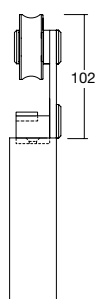
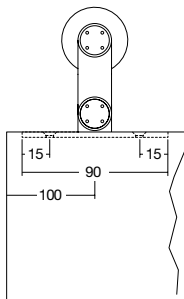


Trolleys



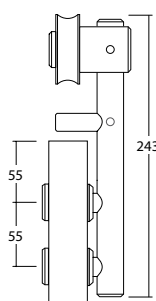
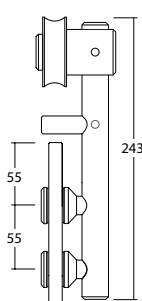
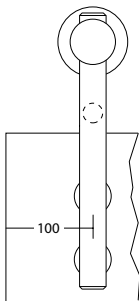
Art. No. **Trolley, Flatec I**
 USO120DS-EF for glass doors $t = 8 - 12$ mm
 USO121DS-EF for wooden doors $t = 38 - 45$ mm
 adjustable height, approx. $\pm 3,5$ mm
 satin stainless steel (AISI 303/304)

- ▼ Maximum door weight 100 kg (using pairs)
- ▼ Glass drill holes $\varnothing 12$ mm + 0,3 mm
- ▼ Wood drill holes $\varnothing 10$ mm + 0,3 mm



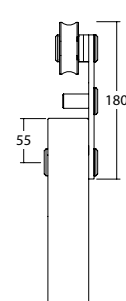
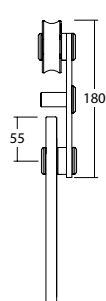
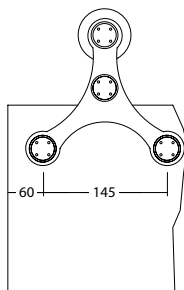
Art. No. **Trolley, Flatec II**
 USO130DS-EF for glass doors $t = 36 - 45$ mm
 without height adjustment
 satin stainless steel (AISI 303/304)

- ▼ Maximum door weight 100 kg (using pairs)



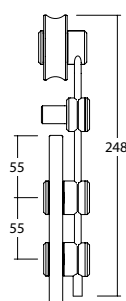
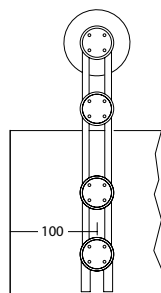
Art. No. **Trolley, Unotec Home**
 USH100DS-EF for glass doors $t = 8 - 12$ mm
 USH105DS-EF for wooden doors $t = 38 - 45$ mm
 without height adjustment
 satin stainless steel (AISI 303/304)

- ▼ Maximum door weight 100 kg (using pairs)
- ▼ Glass drill holes $\varnothing 12$ mm + 0,3 mm
- ▼ Wood drill holes $\varnothing 10$ mm + 0,3 mm



Art. No. **Trolley, Tritec**
 USO122DS-EF for glass doors $t = 8 - 12$ mm
 USO123DS-EF for wooden doors $t = 38 - 45$ mm
 adjustable height, approx. $\pm 3,5$ mm
 satin stainless steel (AISI 303/304)

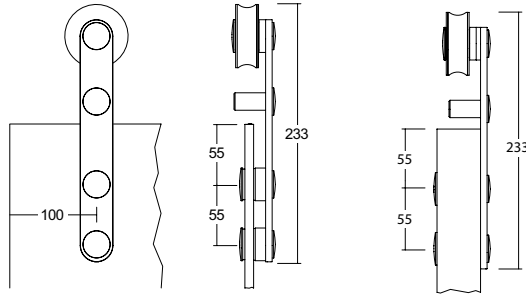
- ▼ Maximum door weight 100 kg (using pairs)
- ▼ Glass drill holes $\varnothing 12$ mm + 0,3 mm
- ▼ Wood drill holes $\varnothing 10$ mm + 0,3 mm



Art. No. **Trolley, Duetec**
 USO110EF for glass doors $t = 8 - 10$ mm
 adjustable height, approx. $\pm 3,5$ mm
 satin stainless steel (AISI 303)

- ▼ Maximum door weight 60 kg (using pairs)
- ▼ Glass drill holes $\varnothing 12$ mm + 0,3 mm

Trolleys



Art. No.
USO126DB
USO129DB

Trolley, Antra I
for glass doors, $t = 8 - 12$ mm
for wooden doors, $t = 38 - 45$ mm,
adjustable height, approx. $\pm 3,5$ mm,
Stainless steel - dark bronze coated

- ▼ Maximum door weight 100 kg (using pairs)
- ▼ Glass drill holes $\varnothing 13$ mm + 0,3 mm
- ▼ Wood drill holes $\varnothing 10$ mm + 0,3 mm



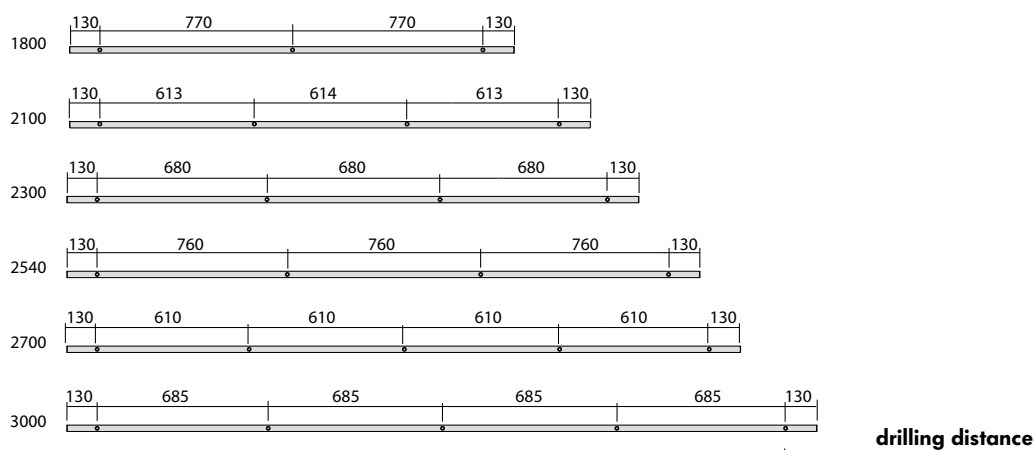
Art. No.
USO131DB

Trolley, Antra II
for wooden doors, $t = 36 - 45$ mm
without height adjustment,
Stainless steel - dark bronze coated

- ▼ Maximum door weight 100 kg (using pairs)



Track rails

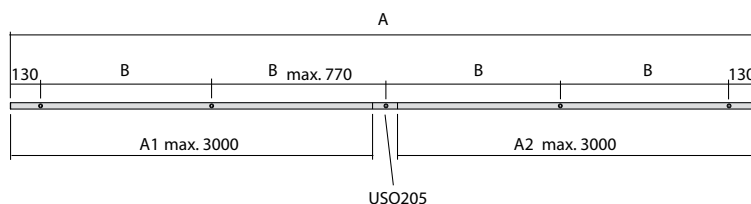


Track rail ø 25 mm, solid, satin stainless steel (AISI 303) one-piece, for single doors:

Art. No.	track rail length	passage width	number of wall brackets
USO200 - 180EF	1800	750 - 900	3
USO200 - 210EF	2100	901 - 1000	4
USO200 - 230EF	2300	1001 - 1120	4
USO200 - 254EF	2540	1121 - 1250	4
USO200 - 2700EF	2700	1251 - 1400	5
USO200 - 3000EF	3000	1401 - 1500	5

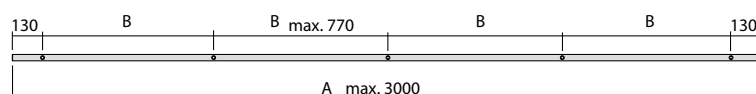
Track rail ø 25 mm, solid, satin stainless steel (AISI 303) two-piece, with coupling for bi-parting doors:

Art. No.	track rail length	passage width	number of wall brackets
USO200 - 3650EF	3650	1500 - 1800	7
USO200 - 4850EF	4850	2000 - 2400	9

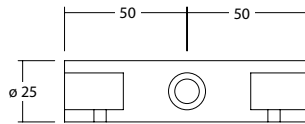


Track rail ø 25 mm, solid, custom made:

USO200EF Please note length and drilling distance

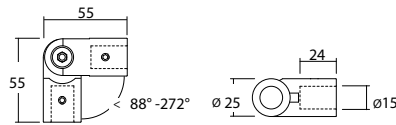


Coupling



Art. No.
USO205EF

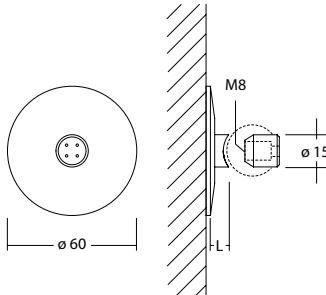
Coupling, traversable
ø 25 mm, l = 100 mm
for track rail USO200EF
satin stainless steel (AISI 303)



Art. No.
110.00141

Coupling, angle adjustable
ø 25 mm, L: 55 mm
angle adjustment 90° to 270°
for track rail USO200EF
solid, ø 25 mm
Special order of track rail
satin stainless steel (AISI 303)

Wall brackets

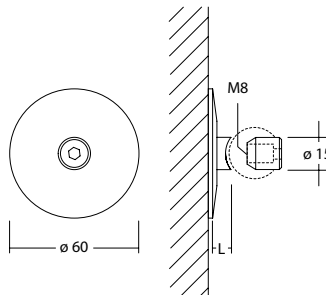


Art. No.
USO210EF

Wall mount (M8)
for glass doors on masonry
without trim and baseboard
disc ø 60 mm, distance l = 5 mm
with hanger bolt M8 x 70 mm

USO215EF

for wooden doors on masonry
without trim and baseboard
disc ø 60 mm, distance l = 19 mm
with hanger bolt M8 x 90 mm
satin stainless steel (AISI 303)



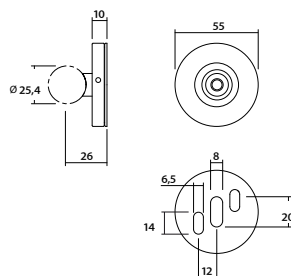
Art. No.
USO212DB

Wall mount (M8)
for glass doors on masonry
without trim and baseboard
disc ø 60 mm, distance l = 19 mm
with hanger bolt M8 x 90 mm
satin stainless steel - dark bronze coated

USO214DB

for wooden doors on masonry
without trim and baseboard
disc ø 60 mm, distance l = 19 mm
with hanger bolt M8 x 90 mm
satin stainless steel - dark bronze coated

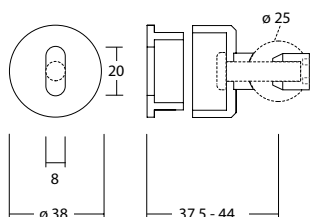
Wall bracket, adjustable



Art. No.
110.00142

Wall brackets, adjustable
for track rail USO200EF, solid ø 25 mm
walldisc +/- 5 mm adjustable in height
and +/- 5 mm adjustable in width,
satin stainless steel (AISI 303)
hook wrench Z932 is necessary
(see page 30)

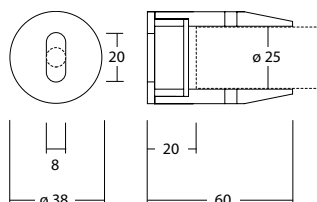
Wall bracket, adjustable



Art. No.
USO242EF

Wall mount, adjustable
for track rail USO200EF
wall clearance + 6 mm
adjustable in height +/- 6 mm
using elongated hole,
satin stainless steel (AISI 303)

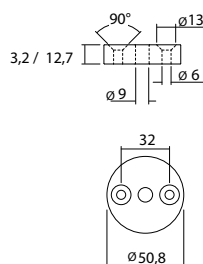
Wall brackets, end face



Art. No.
USO240EF

Wall bracket, end face
for track rail USO200EF
attachment point is adjustable
using elongated hole,
satin stainless steel (AISI 303)

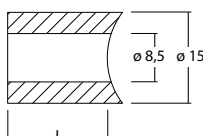
Spacer disc drywall



Art. No.
USO213K

Spacer disc-set, for drywall
thickness: 12.7 / 3.2 mm
for strong track rail mounting on a
support frame for dry wall
drill hole in drywall with \varnothing 52-54 mm,
plastic

Spacer



Art. No.

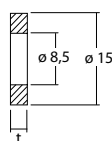
Spacer \varnothing 15 mm

for glass doors with baseboards and
trimmings, distance $l = 19$ mm
USO226-19EF satin stainless steel (AISI 303) or
USO226-19DB satin stainless steel - dark bronze coated
for wooden doors with baseboards and
trimmings, distance $l = 33$ mm
USO226-33EF satin stainless steel (AISI 303) or
USO226-33DB satin stainless steel - dark bronze coated

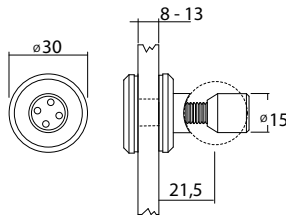
Art. No.

Spacer disc \varnothing 15 mm
to compensate wall unevenness,
only one piece per wall mount!

satin stainless steel (AISI 303), solid
USO216-2EF thickness $t = 2$ mm
USO216-5EF thickness $t = 5$ mm
USO216-10EF thickness $t = 10$ mm
or satin stainless steel - dark bronze coated
USO216-2DB thickness $t = 2$ mm
USO216-5DB thickness $t = 5$ mm
USO216-10DB thickness $t = 10$ mm



■ Mounting on glass, rigid

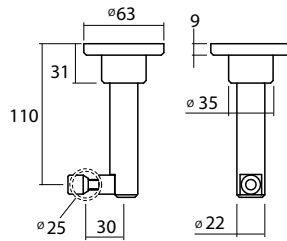


Art. No.
USO230G

Glass mount set
for glass doors $t = 8 - 12$ mm
distance $l = 5$ mm
decorative screw $\varnothing 30$ mm
for mounting the track rail
USO200EF onto glass panel
glass protection set
satin stainless steel (AISI 303)

▼ Glass drill holes $\varnothing 15$ mm + 0,3 mm

■ Ceiling fixture

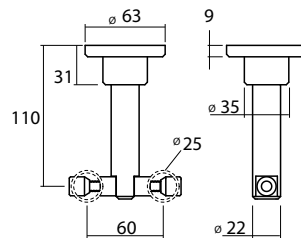


Art. No.
110.00143

Ceiling mount
for single track rail USO200EF
prepared for glass door $t = 8 - 12,7$ mm
satin stainless steel (AISI 303)

110.00156

additional kit for wooden doors
($t = 38 - 45$ mm)



Art. No.
110.00144

Ceiling mount
for double track rails USO200EF
prepared for glass door $t = 8 - 12,7$ mm
satin stainless steel (AISI 303)

110.00157

additional kit for wooden doors
($t = 38 - 45$ mm)



■ Damper set Soft-Tec

Our trolleys are characterised by their particularly smooth and safe movement, which corresponds with the specific norms. The special stoppers catch any door fitting. One of our own patented developments is the Soft-Tec damper. It combines a damping effect when opening the door with a stopping aid. The system can be used in the initial assembly and for retrofitting.

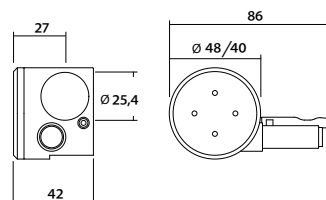


The system is available for the trolley systems:

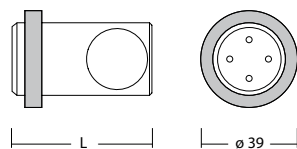
glass doors: Flatec I, Unotec Home, Tritec

wooden doors: Flatec I, Flatec II, Unotec Home, Tritec.

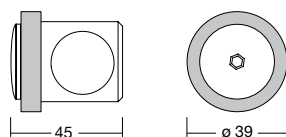
Art.No.	Soft-Tec Damper set
USO290EF	pair of Soft-Tec damper stop, door weight 30 - 60 kg satin stainless steel (AISI 303/304)
110.00192	pair of Soft-Tec damper stop for Flatec 1 / 2 door weight 30 - 60 kg satin stainless steel (AISI 303/304))
110.00191	Replacement damper for door weight 15 - 30 kg



■ Door stoppers

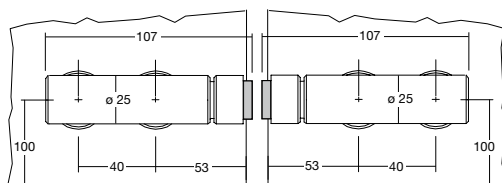


Art. No.	Door stopper
USO250EF	for Unotec Home/Object ø 30 mm, length l = 57 mm
USO251EF	for Flatec, Duetec, Tritec ø 30 mm, length l = 45 mm rubber, satin stainless steel (AISI 303)



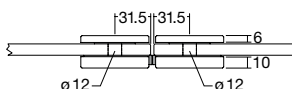
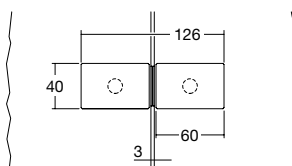
Art. No.	Door stopper
USO254DB	for Antra, l = 45 mm rubber, satin stainless steel - dark bronze coated

■ Door stoppers, for biparting panels



Art. No.
USO255EF

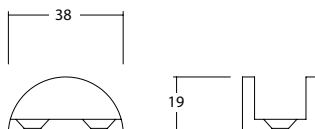
Door stopper set
1 pair for for biparting panels,
ø 25 mm
stopper adjustable
satin stainless steel (AISI 303), rubber
▼ glass drill holes ø 14 mm + 0,3 mm



Art. No.
USO257EF

Door stopper set
1 pair for biparting panels,
L = 126 mm,
satin stainless steel (AISI 303)
▼ glass drill holes ø 12 mm + 0,3 mm
▼ suitable Allen key (SW5), Z926
(order separately)

■ Bottom guides

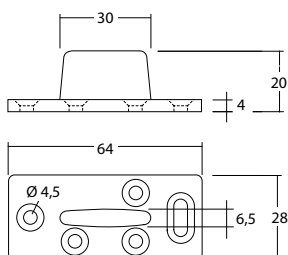


Art. No.

Bottom guides for glass doors
for door panel thickness $t = 8 - 12$ mm,
with felt insert

USO260EF
USO260DB

satin stainless steel (AISI 304)
satin stainless steel - dark bronze coated

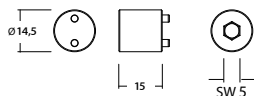


Art. No.
USH268K

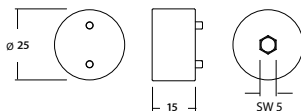
Bottom guides for wooden doors
for door panel thickness $t > 30$ mm,
plastic

▼ panel channel for bottom guides
7 x 17 mm

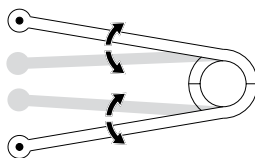
■ Mounting tools



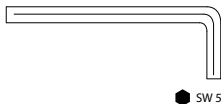
Art. No. **Assembly aid**
110.00145 Snap-on for hexagon
to suit 4 hole wall brackets



110.00146 spanner head for hexagon
to suit 4 hole screws on runners



Art. No. **Calliper face spanner S**
Z923 for mounting decorative caps and
4 hole screws,
(adjustable)



Art. No. **Allen key SW5**
Z926 for mounting decorative caps and
screws with internal hexagon



Art. No. **Hook wrench**
Z931 for wall/glass brackets \varnothing 45 mm
Z932 for wall/glass brackets \varnothing 55 mm
Z924 for Flatec glass connector

EconoLine



Trolleys

For glass doors

For wooden doors



Project glass

Flatec 4 glass

Flatec 4 glass
polished

Project wood

Flatec 4 wood

Flatec 4 wood
polished

Flatec 5 wood

Torole

Name	capacity	tested according to EN 1527 : 2013	adjustable height	page
Project glass	100 kg	yes	no	33
Flatec 4 glass	100 kg	yes	yes	34
Flatec 4 glass polished	100 kg	yes	yes	35
Project wood	100 kg	yes	no	33
Flatec 4 wood	100 kg	yes	yes	34
Flatec 4 wood polished	100 kg	yes	yes	35
Flatec 5 wood	100 kg	yes	no	36
Torole	60 kg	no	yes	37



Sliding door fittings acc. with EN 1527 : 2013

The testing institute ift Rosenheim has successfully tested our ABP-Beyerle sliding door systems for glass or wooden doors. Certificates are available for the following systems:

Flatec I, Flatec II, Unotec Home, Tritec, Antra I, Antra II, Flatec V, Duetec, Flatec IV, Silent Glam, Belans.

Functional for at least 100,000 cycles

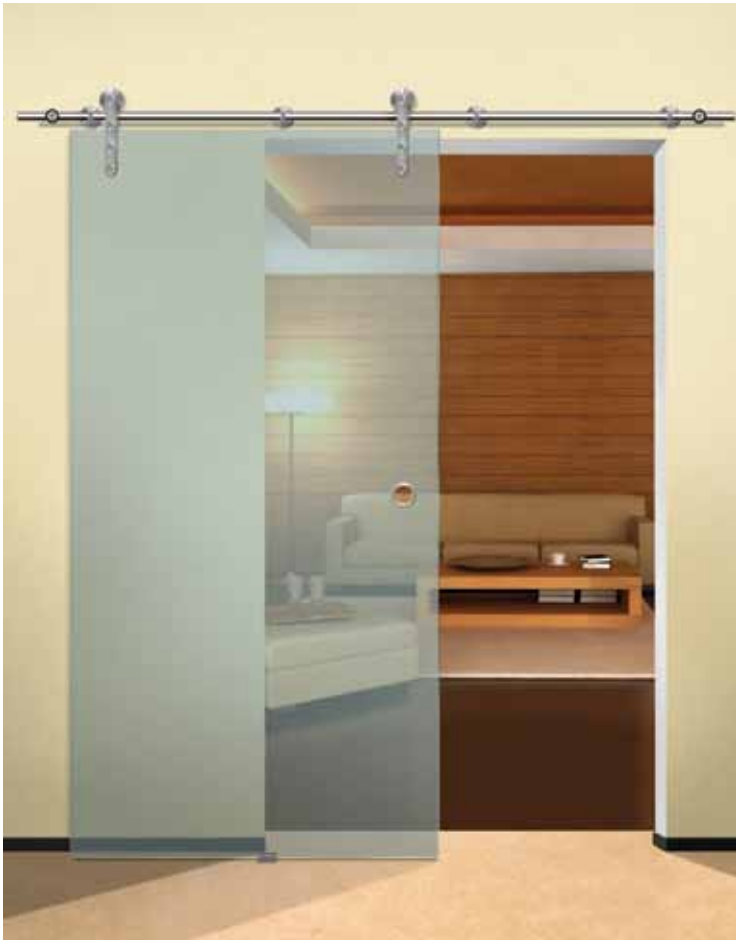
Door weight: 100 kg

Corrosion resistance: 240 h salt spray fog

Initial friction: less than or equal to 40 N (with a 100 kg door)

Further information page 6.

Project



Trolley Project for glass and wooden door panels

Complete sets, standard model for glass doors, $t = 8 - 12 \text{ mm}$

Complete sets, standard model for wooden doors, $t = 38 - 45 \text{ mm}$
consisting of:

1 track rail, tubular, stainless steel, $\varnothing 25 \text{ mm}$, USO202EF
length: see table

3-4 wall attachments, stainless steel,

USO228EF – glass

USO227EF – wood

2 trolleys Project, stainless steel,

USO124EF for glass, USO125EF wood

2 door stoppers, stainless steel, USO256EF

1 bottom guide, stainless steel, USO261EF glass

1 bottom guide, plastic, USH268K wood

1 Allen key (SW5), Z926, 1 installation instruction

Glass set	track rail length	passage width
Set numbers	mm	mm
USO97-1800EF	1800	750 - 900
USO97-2100EF	2100	910 - 1000
USO97-2300EF	2300	1010 - 1120
USO97-2540EF	2540	1130 - 1250

Wood set	track rail length	passage width
Set numbers	mm	mm
USO98-1800EF	1800	750 - 900
USO98-2100EF	2100	910 - 1000
USO98-2300EF	2300	1010 - 1120
USO98-2540EF	2540	1130 - 1250

▼ Glass drill holes $\varnothing 15 \text{ mm} + 0,3 \text{ mm}$

▼ Wood drill holes $\varnothing 10 \text{ mm} + 0,3 \text{ mm}$

Maximum door weight 100 kg

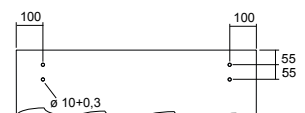
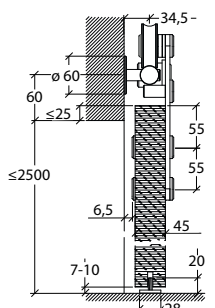
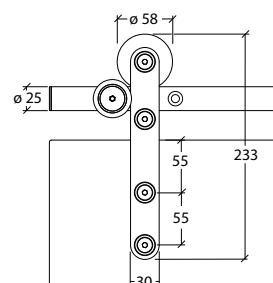
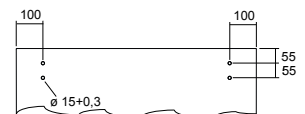
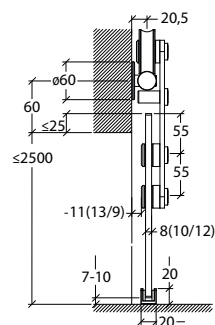
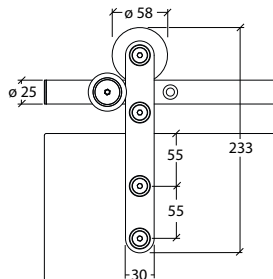
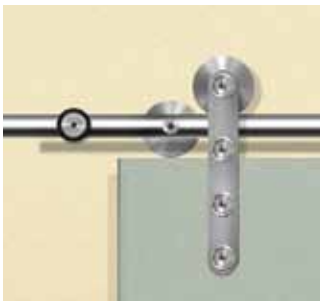
For baseboards and trimmings, order spacer (stainless steel, USO226-19EF) separately for each wall attachment.

Please find planning guides and installation instruction

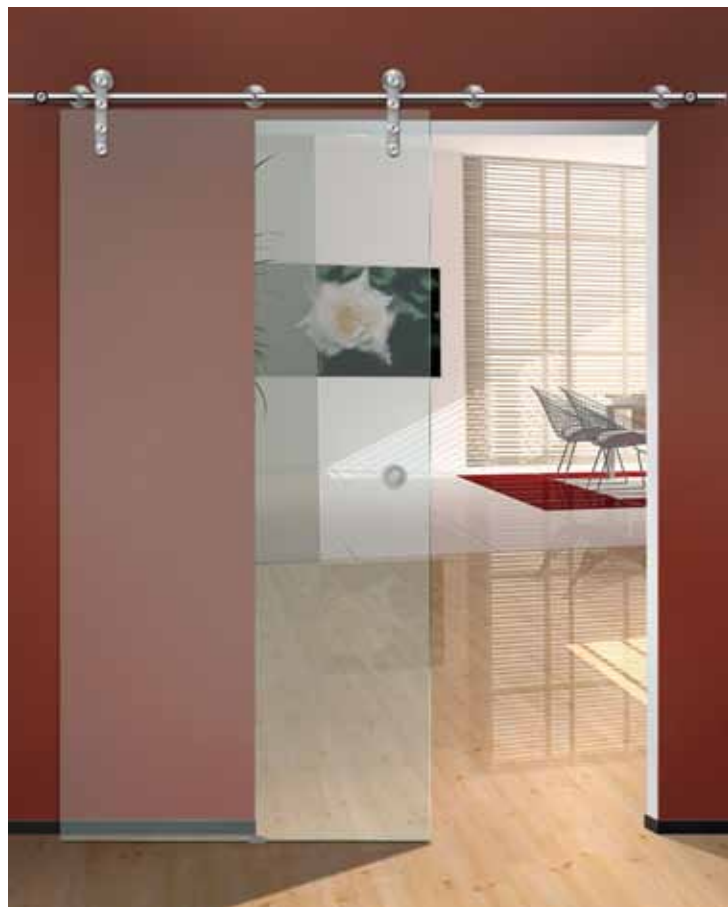
at www.abp-beyerle.de

+ For special lengths of track rails, other individual components and accessories, refer to page 38

Tested according to EN 1527 : 2013



Flatec IV



Flatec IV for glass and wooden door panel

Complete sets, adjustable height, approx. ± 3 mm
 standard model for glass doors, $t = 8 - 12$ mm
 standard model for wooden doors, $t = 38 - 45$ mm
 consisting of:

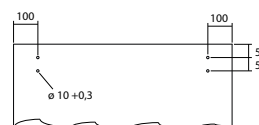
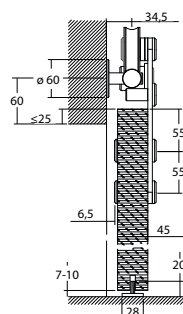
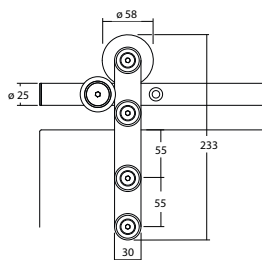
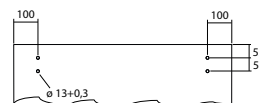
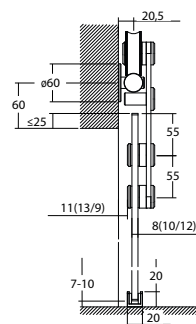
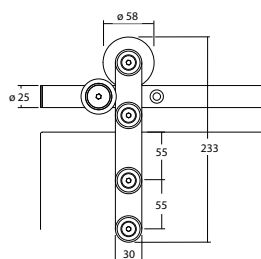
- 1 track rail, tubular, stainless steel, $\varnothing 25$ mm, USO202EF
 length: see table
- 3-4 wall attachments, stainless steel,
 USO228EF – glass I, USO227EF – wood
- 2 trolleys Project, stainless steel,
 USO127EF for glass, USO128EF for wood
- 2 door stoppers, stainless steel, USO256EF
- 1 bottom guide, stainless steel, USO261EF, glass
- 1 bottom guide, plastic, USH268K, wood
- 1 Allen key (SW5), Z926, 1 installation instruction

Glass set	track rail length	passage width
Set numbers	mm	mm
USO94-1800EF	1800	750 - 900
USO94-2100EF	2100	910 - 1000
USO94-2300EF	2300	1010 - 1120
USO94-2540EF	2540	1130 - 1250

Wood set	track rail length	passage width
Set numbers	mm	mm
USO95-1800EF	1800	750 - 900
USO95-2100EF	2100	910 - 1000
USO95-2300EF	2300	1010 - 1120
USO95-2540EF	2540	1130 - 1250

- ▼ Glass drill holes $\varnothing 13$ mm $\pm 0,3$ mm
- ▼ Wood drill holes $\varnothing 10$ mm $\pm 0,3$ mm
- Maximum door weight 100 kg
- For baseboards and trimmings, order spacer (stainless steel, USO226-19EF) separately for each wall attachment.
- Please find planning guides and installation instruction at www.abp-beyerle.de

- + For special lengths of track rails, other individual components and accessories, refer to page 38
- Tested according to EN 1527 : 2013



■ Flatec IV, polished



Flatec IV polished for glass and wooden door panel

Complete sets, adjustable height, approx. ± 3 mm
 standard model for glass doors, $t = 8 - 12$ mm
 standard model for wooden doors, $t = 38 - 45$ mm
 consisting of:

1 track rail, tubular, stainless steel, $\varnothing 25$ mm, USO202EP
 length: see table

3-4 wall attachments, stainless steel,
 USO228EP – glass I, USO227EP – wood

2 trolleys Project, stainless steel,
 USO127EP for glass, USO128EP for wood

2 door stoppers, stainless steel, USO256EP

1 bottom guide, stainless steel, USO261EP, glass

1 bottom guide, plastic, USH268K, wood

1 Allen key (SW5), Z926, 1 installation instruction

Glass set	track rail length	Passage width
Set numbers	mm	mm
USO94-1800EP	1800	750 - 900
USO94-2100EP	2100	910 - 1000
USO94-2300EP	2300	1010 - 1120
USO94-2540EP	2540	1130 - 1250

Wood set	track rail length	Passage width
Set numbers	mm	mm
USO95-1800EP	1800	750 - 900
USO95-2100EP	2100	910 - 1000
USO95-2300EP	2300	1010 - 1120
USO95-2540EP	2540	1130 - 1250

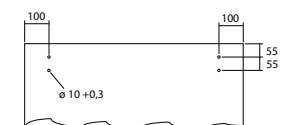
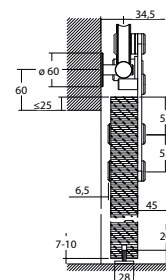
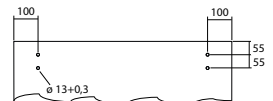
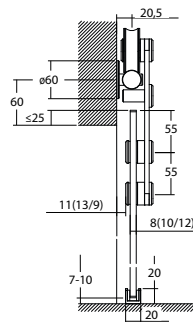
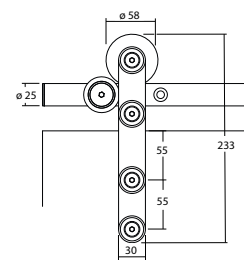
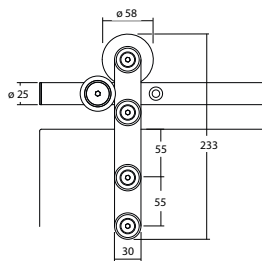
▼ Glass drill holes $\varnothing 13$ mm $\pm 0,3$ mm

▼ Wood drill holes $\varnothing 10$ mm $\pm 0,3$ mm

Maximum door weight 100 kg

For baseboards and trimmings, order spacer (stainless steel, USO226-19EP) separately for each wall attachment.
 Please find planning guides and installation instruction
 at www.abp-beyerle.de

+ For special lengths of track rails, other individual
 components and accessories, refer to page 38
 Tested according to EN 1527 : 2013



■ Flatec V



Trolley Flatec V for wooden panels

Complete sets, standard model, $t = 38 - 45$ mm
unadjustable height, consisting of:

- 1 track rail, tubular, stainless steel, $\varnothing 25$ mm, USO202EF
- length: see table
- 4-5 wall brackets, stainless steel, USO227EF,
- with hanger bolts $M8 \times 70$ mm
- 2 trolleys Flatec V wood, stainless steel, USO132DS-EF
- 2 door stoppers, stainless steel, USO256EF
- 1 bottom guide, plastic, USH268K
- 1 Allen key (SW5), Z926
- 1 installation instruction

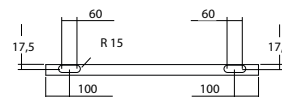
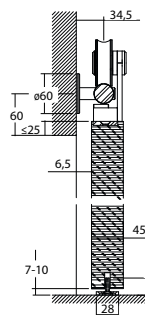
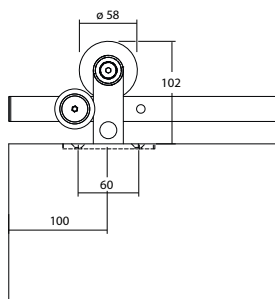
Set numbers	track rail length mm	passage width mm
USO96-1800EF	1800	750 - 900
USO96-2100EF	2100	910 - 1000
USO96-2300EF	2300	1010 - 1120
USO96-2540EF	2540	1130 - 1250

▼ Maximum door weight 100 kg

For baseboards and trimmings, order spacer,
(USO226 - 19EF) separately for each wall attachment.
Please find planning guides and installation instruction
at www.abp-beyerle.de

+ For special lengths of track rails, other individual components and accessories refer to page 38

Tested according to EN 1527 : 2013





Trolley Torole for wooden panels

Complete sets, standard model, $t = 38 - 45$ mm adjustable height, approx. ± 3 mm, consisting of:

- 1 track rail, tubular, stainless steel, $\varnothing 25$ mm, USO202EF
- length: see table
- 4 - 5 wall brackets, stainless steel, USO227EF,
- 2 trolleys Torole wood, stainless steel, 110.00098
- 2 door stoppers, stainless steel, 130.00013
- 1 bottom guide, plastic, USH268K
- 1 Allen key (SW5), Z926
- 1 installation instruction

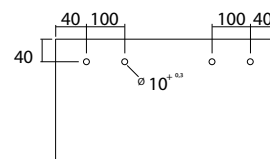
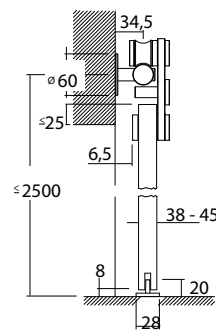
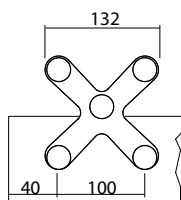
Set numbers	track rail length mm	passage width mm
110.00100	1800	750 - 900
110.00101	2100	910 - 1000
110.00102	2300	1010 - 1120
110.00103	2540	1130 - 1250

▼ Maximum door weight 60 kg

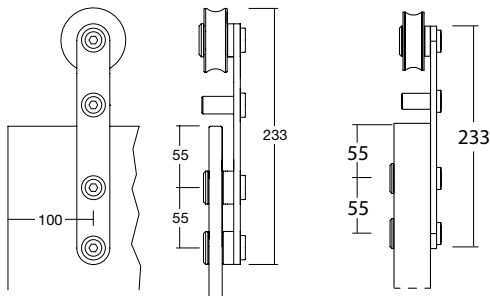
For baseboards and trimmings, order spacer, (USO226 - 19EF) separately for each wall attachment.

Please find planning guides and installation instruction at www.abp-beyerle.de

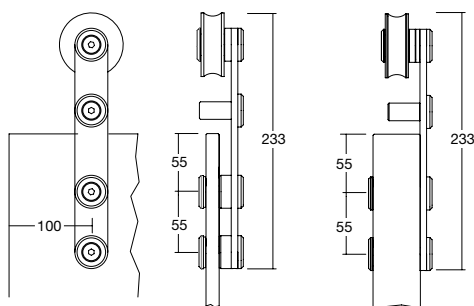
- + For special lengths of track rails, other individual components and accessories refer to page 38



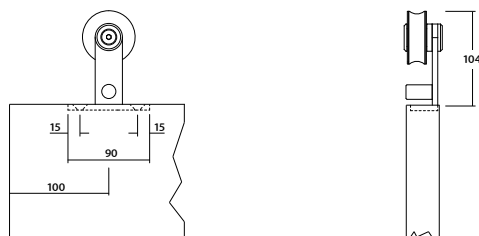
Trolleys



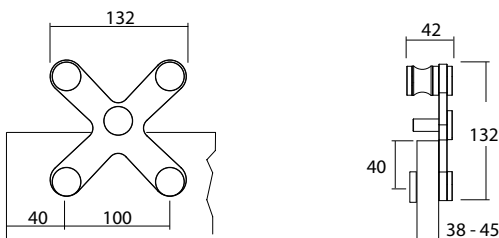
- Art. No.** **Trolley Project**
 USO124EF for glass doors $t = 8 - 12 \text{ mm}$
 USO125EF for wooden doors $t = 38 - 45 \text{ mm}$
 unadjustable height,
 satin stainless steel (AISI 303/304)
- ▼ Maximum door weight 100 kg (using pairs)
 - ▼ Glass drill holes $\varnothing 12 \text{ mm} + 0,3 \text{ mm}$
 - ▼ Wood drill holes $\varnothing 10 \text{ mm} + 0,3 \text{ mm}$



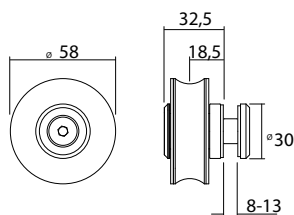
- Art. No.** **Trolley Flatec 4**
satin stainless steel (AISI 303/304)
 USO127EF for glass doors $t = 8 - 12 \text{ mm}$
 USO128EF for wooden doors $t = 38 - 45 \text{ mm}$
 adjustable height, approx. $\pm 3,5 \text{ mm}$
- Polished stainless steel:**
 USO127EP for glass doors $t = 8 - 12 \text{ mm}$
 USO128EP for wooden doors $t = 38 - 45 \text{ mm}$
 adjustable height, approx. $\pm 3,5 \text{ mm}$
- ▼ Maximum door weight 100 kg (using pairs)
 - ▼ Glass drill holes $\varnothing 12 \text{ mm} + 0,3 \text{ mm}$
 - ▼ Wood drill holes $\varnothing 10 \text{ mm} + 0,3 \text{ mm}$



- Art. No.** **Trolley Flatec 5**
 USU132DS-EF for wooden doors $t = 38 - 45 \text{ mm}$
 satin stainless steel (AISI 303/304)
- ▼ Maximum door weight 100 kg (using pairs)
 - ▼ Glass drill holes $\varnothing 12 \text{ mm} + 0,3 \text{ mm}$
 - ▼ Wood drill holes $\varnothing 10 \text{ mm} + 0,3 \text{ mm}$

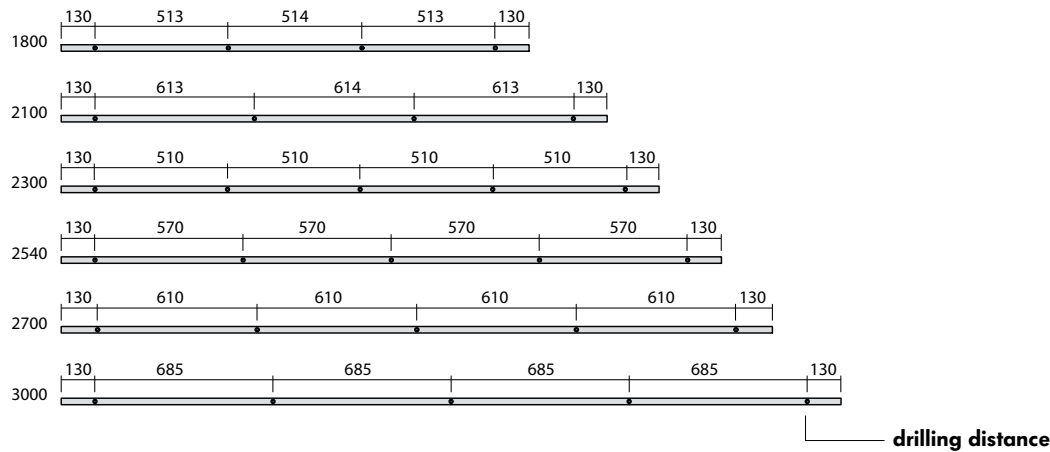


- Art. No.** **Trolley Torole**
 110.00098 for wooden doors $t = 38 - 45 \text{ mm}$
 adjustable height, approx. $\pm 3,5 \text{ mm}$
 satin stainless steel (AISI 303/304)
- ▼ Maximum door weight 60 kg (using pairs)
 - ▼ Wood drill holes $\varnothing 10 \text{ mm} + 0,3 \text{ mm}$



- Art. No.** **Trolley, usage by pairs**
 track rail: top wheel / bottom
 Top: Roller Bottom: Anti-Lift device
 110.00104 for glass doors $t = 8 - 13 \text{ mm}$
 satin stainless steel (AISI 303/304)
- ▼ Maximum door weight 100 kg (using pairs)
 - ▼ Glass drill holes $\varnothing 12 \text{ mm} + 0,3 \text{ mm}$

Track rail (tubular)

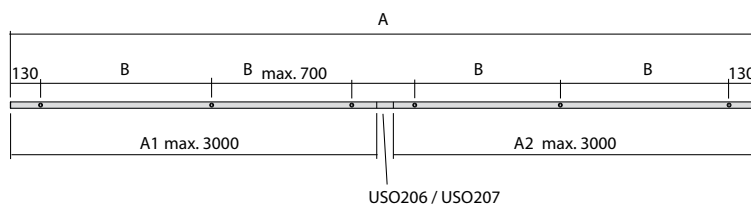


Track rail ø 25 mm, tubular, satin stainless steel (AISI 304) one-piece, for single doors:

Art. No.	track rail length mm	passage width mm	number of wall brackets
USO202 - 180EF	1800	750 - 900	4
USO202 - 210EF	2100	901 - 1000	4
USO202 - 230EF	2300	1001 - 1120	4
USO202 - 254EF	2540	1121 - 1250	4
USO202 - 270EF	2700	1251 - 1400	5
USO202 - 300EF	2700	1401 - 1500	6

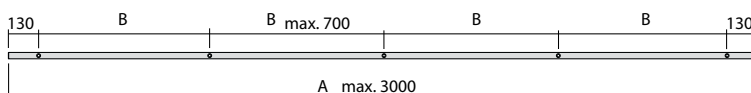
Track rail ø 25 mm, tubular, satin stainless steel (AISI 304) two-piece, with coupling for biparting panels:

Art. No.	track rail length mm	passage width mm	number of wall brackets
USO202 - 3650EF	3650	1500 - 1800	8
USO202 - 4850EF	4850	2000 - 2400	10

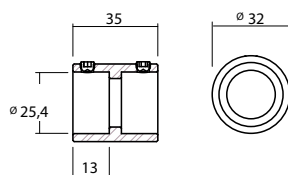


Track rail ø 25mm, solid, custom made:

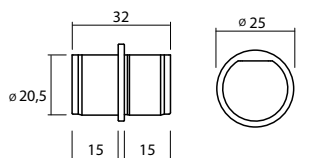
USO202EF Please note length and drilling distance



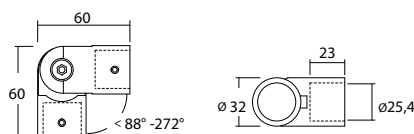
Coupling


Art. No. Coupling \varnothing 32 mm

USO206EF for track rail (tubular) USO202EF
non traversable
satin stainless steel (AISI 303)

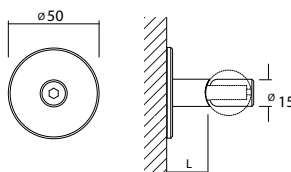

Coupling

USO207EF for track rail (tubular) USO202EF
traversable
satin stainless steel (AISI 303)


Art. No. Angle coupling, flexible, \varnothing 32 mm

110.00147 angle adjustment 90° to 270° , $l = 60$ mm
for track rail (tubular) USO202EF, \varnothing 25 mm
satin stainless steel (AISI 303)

Wall bracket

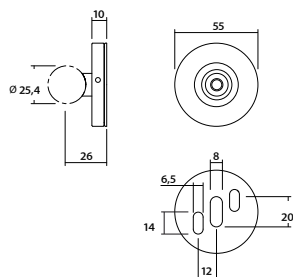

Art. No. Wall mount for glass doors on masonry

USO228EF without baseboards and trimmings
disc $\varnothing = 50$ mm, distance $l = 5$ mm
with hanger bolt M8 \times 70 mm
satin stainless steel (AISI 303)

Art. No. Wall mount for wooden doors on masonry

USO227EF without baseboards and trimmings
disc $\varnothing = 50$ mm, distance $l = 19$ mm
with hanger bolt M8 \times 90 mm
satin stainless steel (AISI 303)

Wall bracket, adjustable

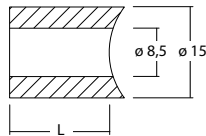

Art. No. Wall mount, adjustable

for track rail (tubular) \varnothing 25 mm
wall disc ± 5 mm adjustable in height
and ± 5 mm adjustable in width
hook wrench Z932 is necessary
satin stainless steel (AISI 303)

110.00148 for glass door panel $t = 8 - 12$ mm

110.00151 for wooden door panel $t = 38 - 45$ mm

■ Spacer

**Art. No.****Spacer \varnothing 15 mm**

for glass doors with baseboards and trimmings, distance $l = 19$ mm

USO226-19EF

satin stainless steel (AISI 303) or

USO226-19DB

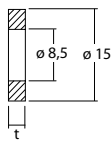
satin stainless steel - dark bronze coated
for wooden doors with baseboards and trimmings, distance $l = 33$ mm

USO226-33EF

satin stainless steel (AISI 303) or

USO226-33DB

satin stainless steel - dark bronze coated

**Art. No.****Spacer disc \varnothing 15 mm**

to compensate wall unevenness,
only one piece per wall mount

satin stainless steel (AISI 303), solid

USO216-2EF

thickness $t = 2$ mm

USO216-5EF

thickness $t = 5$ mm

USO216-10EF

thickness $t = 10$ mm

or satin stainless steel - dark bronze coated

USO216-2DB

thickness $t = 2$ mm

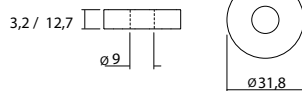
USO216-5DB

thickness $t = 5$ mm

USO216-10DB

thickness $t = 10$ mm

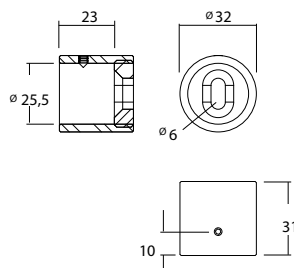
■ Spacer disc for drywall

**Art. No.****Spacer disc-set
for drywall**

USO213K

thickness: 12.7 / 3.2 mm
for strong runner rail attachment
on a carrier frame for stud walls
drill hole in drywall with
D: 34 - 38 mm, plastic

■ Wall mount, end face

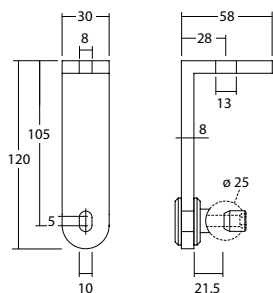
**Art. No.**

130.00003

Wall mount, end face

for track rail (tubular) USO202EF
attachment point can be adjustable
using elongated hole,
satin stainless steel (AISI 303)

Ceiling mount

**Art. No.**

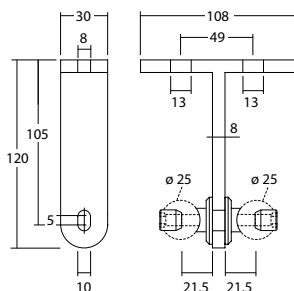
USO248 - 202EF

Ceiling mount

for single track rail (tubular) USO202EF
attachment point can be adjustable
using elongated hole
prepared for glass door $t = 8 - 13$ mm
satin stainless steel (AISI 303/304)

USO248 -H

additional kit for wooden doors
($t = 38 - 45$ mm)

**Art. No.**

USO249 - 202EF

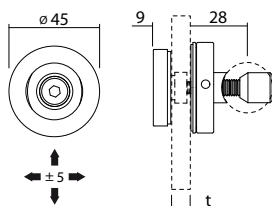
Ceiling mount

for double track rail (tubular) USO202EF
attachment point can be adjustable
using elongated hole
prepared for glass door $t = 8 - 13$ mm
satin stainless steel (AISI 303/304)

USO249 -H

additional kit for wooden doors
($t = 38 - 45$ mm)

Glass mount, countertop

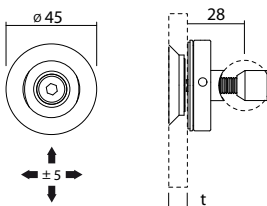
**Art. No.**

110.00149

Glass mount set, $\varnothing 45$ mm

for track rail (tubular) USO202EF
height and side adjustable (± 5 mm)
for glass doors $t = 8 - 12$ mm
satin stainless steel (AISI 303)
glass drill holes: $\varnothing = 17$ mm
hook wrench Z931 is necessary
(see page 30)

Glass mount, adjustable, countersunk

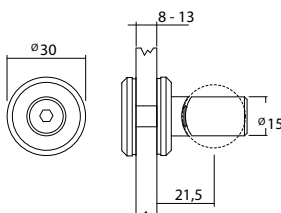
**Art. No.**

110.00150

Glass mount set, countersunk, $\varnothing 45$ mm

for track rail (tubular) USO202EF
height and side adjustable (± 5 mm)
for glass doors $t = 8 - 12$ mm
satin stainless steel (AISI 303)
glass drill holes $\varnothing 30/5 \times 45^\circ$
hook wrench Z931 is necessary
(see page 30)

Glass mount, rigid

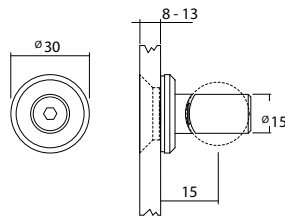
**Art. No.**

USO229EF

Glass mount set, $\varnothing 30$ mm

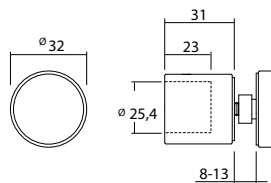
for track rail (tubular) USO202EF
including glass protection set
for glass doors $t = 8 - 13$ mm
satin stainless steel (AISI 303)
glass drill holes $\varnothing 16$ mm

■ Glass mount, countersunk



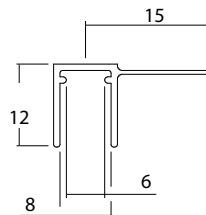
Art. No. 110.00152
Glass mount set, ø 30 mm
 for track rail (tubular) USO202EF
 including glass protection set,
 for glass doors $t = 8 - 13$ mm,
 satin stainless steel (AISI 303)
 glass drill holes $\varnothing 20/5 \times 45^\circ$

■ Glass mount, end face



Art. No. 110.00190
Glass mount, end face
 for track rail (tubular) USO202EF
 attachment point can be adjustable
 using elongated hole,
 satin stainless steel (AISI 303)
 glass drill holes $\varnothing 14$ mm

■ Profile seal



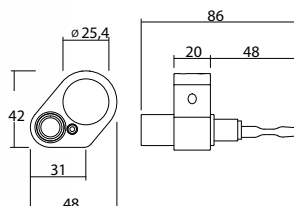
Art. No. DTB2840K
 DTB2845K
Profile for glass edge mounting
 for noise reduction by partition walls or
 reducing water seepage in the shower
 for glass door panel 6 - 8 mm
 for glass door panel 10 - 13 mm
 L: 210 mm
 PVC hard/soft combination, transparent

Soft Stop



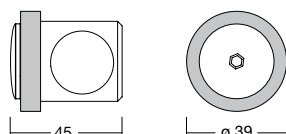
These simple Soft Stop dampers unite the functions of a damping effect when opening the door and a stopping aid. This system is suitable for initial application and for reimbursement.

The Soft Stop damper is available for the following trolleys:
Project, Flatec 4 and Flatec 5



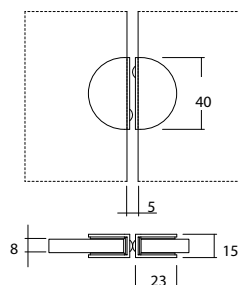
Art. No.	Softstop damper for trolleys Project, Flatec IV and Flatec V, damping of the door impact with stopping aid aluminium/satin stainless steel (AISI 303), rubber buffer
110.00158	maximum door weight 35 - 70 kg
110.00159	maximum door weight 15 - 30 kg

Door stopper



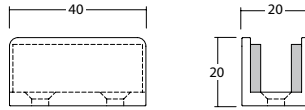
Art. No.	Door stopper for trolleys Projekt, Flatec IV, Flatec VI l = 45 mm satin stainless steel (AISI 303) / rubber
USO256EF	

Door stopper for biparting glass panels

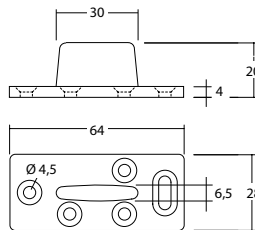


Art. No.	Door stopper set 1 pair for biparting glass panels to be placed on the glass edges, for glass door panel t = 8 mm satin stainless steel (AISI 304))
USO259EF	

Bottom guides



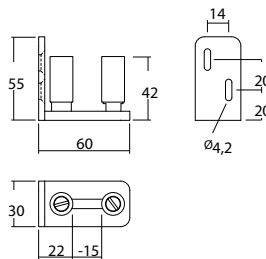
Art. No. **Bottom guide for glass panels**
USO261EF for door panel thickness $t = 8 - 12$ mm,
 with felt insert
 satin stainless steel (AISI 304)



Art. No. **Bottom guide for wooden panels**
USH268K for door panel thickness $t > 30$ mm,
 plastic

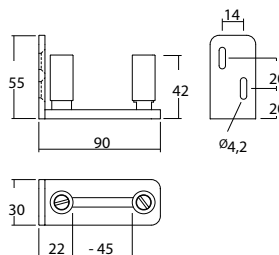
▼ panel channel for bottom guides 7 x 17 mm

Wall mount for door guides



Art. No. **Door guide for wall mounting**
 height adjustable ± 5 mm
 extension: 60 mm
 satin stainless steel (AISI 303/304), plastic

110.00105 for glass doors $t = 8 - 15$ mm



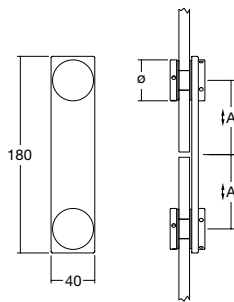
Art. No. **Door guide for wall mounting**
 height adjustable ± 5 mm
 extension: 90 mm
 satin stainless steel (AISI 303/304), plastic

110.00106 for wooden doors $t = 15 - 45$ mm

Flatec glass-connectors

glass-glass

180°-connector

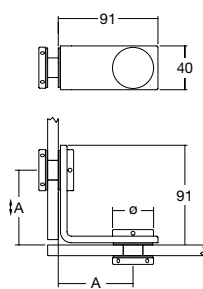


Art. No.	ø	GS	A
----------	---	----	---

USO272EF 38 8 - 13 68
 plain profile 180 x 40 mm, chamfered framed edge (one-sided), material thickness $t = 6$ mm
 decorative caps ø 38 mm with 4 tightening holes
 glass thickness GS = 8 - 13 mm
 (starting from 11 mm glass use thread pin M10 x 25)
 glass protection set
 satin stainless steel (AISI 303/304)

- ▼ Distance A +/- 2 mm adjustable
- ▼ Glass drilling ø 18 mm + 0,3 mm
- ▼ Mounting with ø 4 mm cylinder bolt or hook wrench - DIN 1816 (Art. No. Z924)

90°-connector (inner angle)

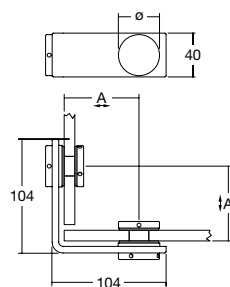


Art. No.	ø	GS	A
----------	---	----	---

USO274EF 38 8 - 13 68
 plain profile 91/91 x 40 mm, chamfered framed edge (one-sided), material thickness $t = 6$ mm
 decorative caps ø 38 mm with 4 tightening holes
 glass thickness GS = 8 - 13 mm
 (starting from 11 mm glass use thread pin M10 x 25)
 glass protection set
 satin stainless steel (AISI 303/304)

- ▼ Distance A +/- 3 mm adjustable
- ▼ Glass drilling ø 18 mm + 0,3 mm
- ▼ Mounting with ø 4 mm cylinder bolt or hook wrench - DIN 1816 (Art. No. Z924)

90°-angle-connector (outer angle)

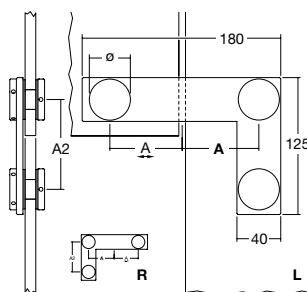


Art. No.	ø	GS	A
----------	---	----	---

USO274EF-AB 38 8 - 13 68
 plain profile 104/104 x 40 mm, chamfered framed edge (one-sided), material thickness $t = 6$ mm
 decorative caps ø 38 mm with 4 tightening holes
 glass thickness GS = 8 - 13 mm
 (starting from 12 mm glass use thread pin M10 x 25)
 glass protection set
 satin stainless steel (AISI 303/304)

- ▼ Distance A +/- 3 mm adjustable
- ▼ Glass drill holes ø 18 mm + 0,3 mm
- ▼ Mounting with ø 4 mm cylinder bolt or hook wrench - DIN 1816 (Art. No. Z924)

3-hole-connector skylight, plain



Art. No.	ø	GS	A	A2
----------	---	----	---	----

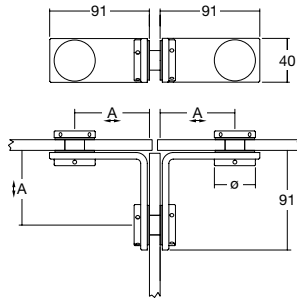
USO275L-EF 38 8 - 13 68 82
 USO275R-EF 38 8 - 13 68 82
 plain profile 180/125 x 40 mm, chamfered framed edge (one-sided), notice: right hand and left hand item!, material thickness $t = 6$ mm
 decorative caps ø 38 mm with 4 tightening holes
 glass thickness GS = 8 - 13 mm, glass protection set
 satin stainless steel (AISI 303/304)

- ▼ Distance A only one-sided +/- 3 mm adjustable (for skylight), the other one and A2 are fixed
- ▼ Glass drill holes ø 18 mm + 0,3 mm
- ▼ Mounting with ø 4 mm cylinder bolt or hook wrench - DIN 1816 (Art. No. Z924)

Flatec glass-Connectors

glass-glass

T-Connector (90°-angle)



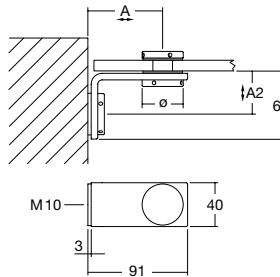
Art. No.	ø	GS	A
USO273EF	38	8 - 13	68

2 x plain profiles 91/91 x 40 mm, chamfered framed edge (one-sided), material thickness $t = 6$ mm, decorative caps $\varnothing 38$ mm with 4 tightening holes, glass thickness GS = 8 - 13 mm (starting from 10 mm glass use thread pin M 10 x 30), glass protection set
satin stainless steel (AISI 303/304)

- ▼ Distance A +/- 3 mm adjustable
- ▼ Glass drilling $\varnothing 18$ mm + 0,3 mm
- ▼ Mounting with $\varnothing 4$ mm cylinder bolt or hook wrench - DIN 1816 (Art. No. Z924)

glass-wall

90°-Connector

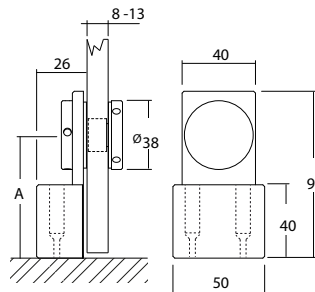


Art. No.	ø	GS	A
USO270EF	38	8 - 13	68

plain profile 91/62 x 40 mm, chamfered framed edge (one-sided), material thickness $t = 6$ mm
decorative caps $\varnothing 38$ mm with 4 tightening holes
glass thickness GS = 8 - 13 mm (starting from 11 mm glass use thread pin M 10 x 25)
glass protection set
satin stainless steel (AISI 303/304)

- ▼ Distance A und A2 +/- 3 mm adjustable
- ▼ Glass drilling $\varnothing 18$ mm + 0,3 mm
- ▼ Mounting with $\varnothing 4$ mm cylinder bolt or hook wrench - DIN 1816 (Art. No. Z924)

glass-floor



Art. No.	ø	GS	A	A2
110.00155	38	8 - 13	68	39

plain profile 91 x 40 mm, chamfered framed edge (one-sided), material thickness $t = 6$ mm
decorative caps $\varnothing 38$ mm with 4 tightening holes
glass thickness GS = 8 - 13 mm (starting from 11 mm glass use thread pin M 10 x 25)
glass protection set
satin stainless steel (AISI 303/304)

- ▼ Distance A +/- 3 mm adjustable
- ▼ Glass drilling $\varnothing 18$ mm + 0,3 mm
- ▼ Mounting with $\varnothing 4$ mm cylinder bolt or hook wrench - DIN 1816 (Art. No. Z924)

Runway



Runway for glass and wooden doors

Complete sets, adjustable height, approx. +/- 3 mm
 standard model for glass doors $t = 8 - 12 \text{ mm}$
 standard model for wooden doors $t = 38 - 45 \text{ mm}$
 consisting of:

- 1 track rail, tubular, stainless steel, 40/10 mm
 length: see table next page
- 3 - 4 wall attachments, stainless steel, 110.00056
- 2 Trolleys, stainless steel,
 110.00058 – glass, bzw. 110.00108 – wood
- 2 door stoppers, stainless steel, 110.00057
- 1 bottom guide, stainless steel, USO261EF – glass
- 1 bottom guide, Plastic, USH268K – wood
- 1 Allen key (SW5), Z926, 1 installation instruction

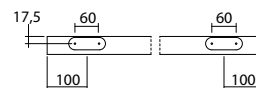
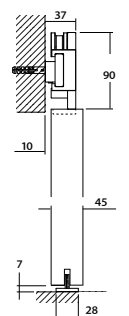
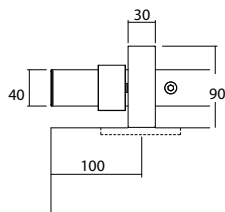
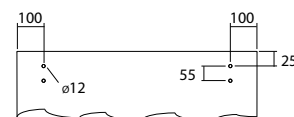
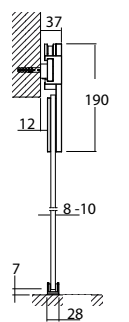
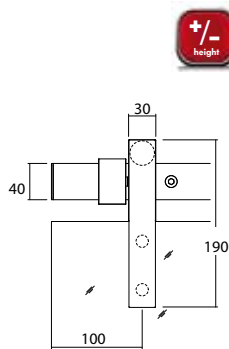
Glass-Set	track rail length	passage width
Set numbers	mm	mm
110.00050	1800	750 - 900
110.00051	2100	910 - 1000
110.00052	2300	1010 - 1120
110.00071	2540	1130 - 1250

Wood set	track rail length	passage width
Set number	mm	mm
110.00109	1800	750 - 900
110.00110	2100	910 - 1000
110.00111	2300	1010 - 1120
110.00112	2540	1130 - 1250

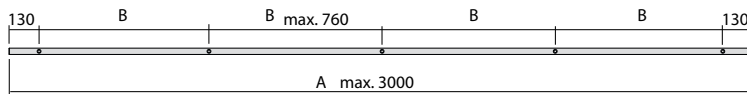
Maximum door weight 80 kg

Please find planning guides and installation instruction
 at www.abp-beyerle.de

Individual components and accessories, refer to page 49



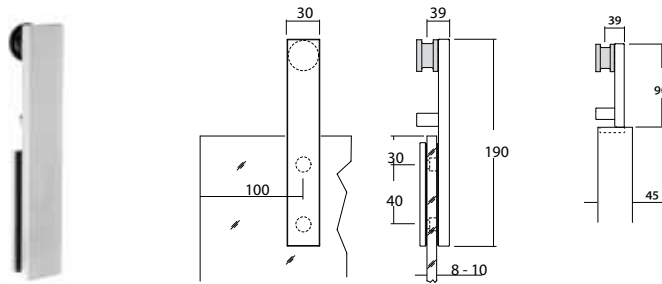
Track rails



Art.Nr.
110.00201

Special track rail for Runway
40 / 10 mm
satin stainless steel (AISI 304)
please notice drilling distance

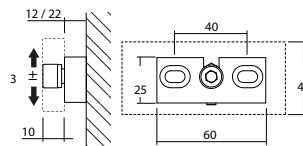
Trolley



Art. No.
110.00058
110.00108

Trolley
for glass doors $t = 8 - 10$ mm
for wooden doors $t = 38 - 45$ mm
▼ Maximum door weight 80 kg
(using pairs)
▼ Glass drill holes $\varnothing 12$ mm + 0,3 mm
▼ Wood drill holes $\varnothing 10$ mm + 0,3 mm

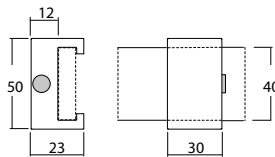
Wall mount



Art. No.
110.00056
110.00188

Wall mount
for glass door $t = 8 - 10$ mm on masonry
for wooden door $t = 38 - 45$ mm on masonry
without baseboards and trimmings
height adjustable ± 3 mm
with screws
aluminium anodized

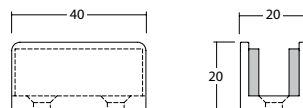
Door stopper



Art. No.
110.00057

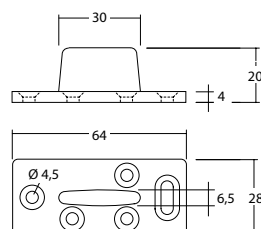
Door stopper
pair of stoppers (left-right)
for glass door $t = 8 - 10$ mm
for wooden door $t = 38 - 45$ mm
measure: 50/40mm
satin stainless steel (AISI 304)

Bottom guides



Art. No.
USO261EF

Bottom guide for glass doors
for door panel thickness $t = 8 - 12$ mm,
with felt insert
satin stainless steel (AISI 304)



Art. No.
USH268K

Bottom guide for wooden doors
for door panel thickness $t > 30$ mm,
plastic

▼ panel channel for bottom guides 7 x 17 mm

■ Shower fittings



Urban Slide III



Art. No. Urban Slide III
 Set consisting of:
 4 trolleys
 2 stoppers
 gap between glasses: 40 mm
 1 bottom guide

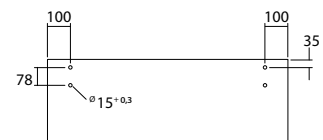
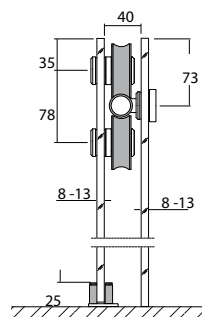
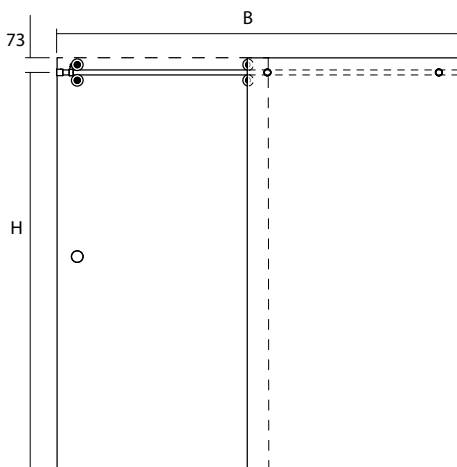
bright chrome:
 130.00061 for 6-8 mm glass thickness
 130.00062 for 9-13 mm glass thickness

satin stainless steel:
 130.00063 for glass thickness 6-8 mm
 130.00064 for glass thickness 9-13 mm

Art. No. glass holder,
 for mounting the track rail on
 a glass sheet

bright chrome:
 130.00048 for glass thickness 6-13 mm

satin stainless steel:
 130.00046 for glass thickness 6-13 mm

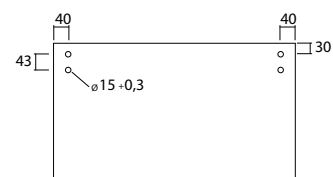
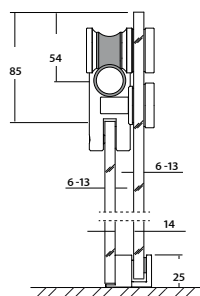
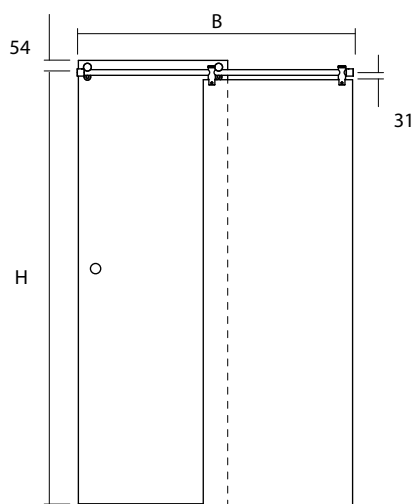


Urban Slide I



- Art. No.** **Urban Slide I**
 Set consisting of:
 2 pcs. rail wheel
 2 pcs. anti lift device
 1 bottom guides
 gap width: 14 mm
- bright chrome:**
 130.00030 for glass thicknesses 6-8 mm
 130.00053 for glass thicknesses 9-13 mm
- satin stainless steel:**
 130.00043 for glass thicknesses 6-8 mm
 130.00051 for glass thicknesses 9-13 mm

- Art. No.** **glass holder,**
 for mounting the track rail
 on a fixed glass panel
- bright chrome:**
 130.00047 for glass thicknesses 6-8 mm
 130.00056 for glass thicknesses 9-13 mm
- satin stainless steel:**
 130.00045 for glass thicknesses 6-8 mm
 130.00055 for glass thicknesses 9-13 mm



Urban Slide II



Art. No. Urban Slide II
Set consisting of:
2 pcs. trolley
2 pcs. door stopper
1 bottom guide

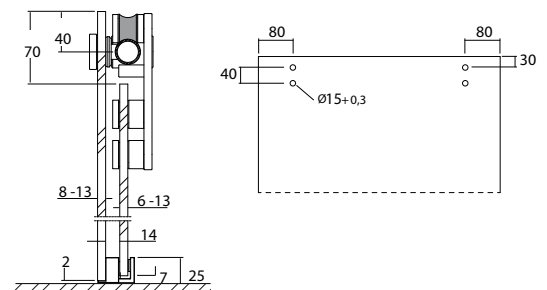
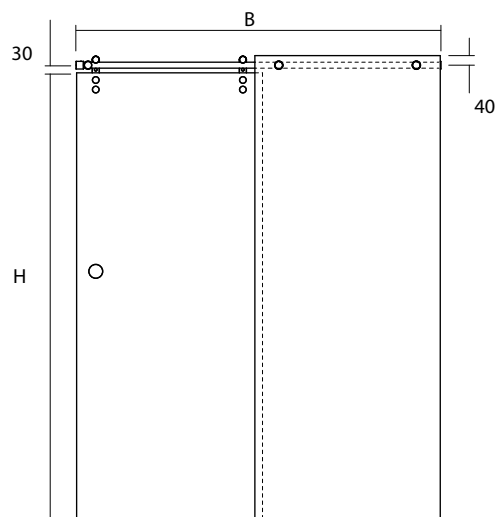
bright chrome:
130.00029 for glass thicknesses 6 - 8 mm
130.00054 for glass thicknesses 9 - 13 mm

satin stainless steel:
130.00044 for glass thicknesses 6 - 8 mm
130.00052 for glass thicknesses 9 - 13 mm

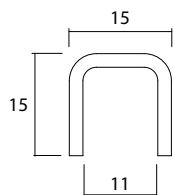
Art. No. glass holder (pair)
for mounting the track rail
on glass

bright chrome:
130.00048 for glass thicknesses 6 - 13 mm

satin stainless steel:
130.00046 for glass thicknesses 6 - 13 mm



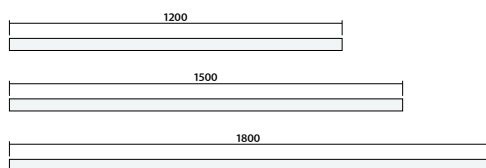
Profile, stainless steel



Art. No.	Profile 15/15 mm
	Length
130.00066	2010 mm
130.00067	2500 mm
130.00068	3000 mm

satin stainless steel (AISI 304)

Track rails



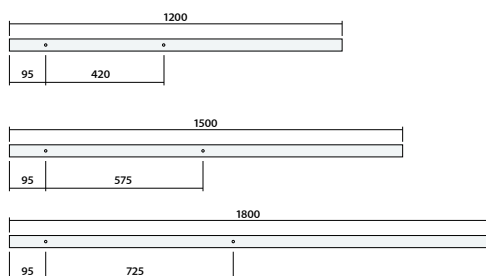
Art. No. Track rail for Urban I

bright chrome, $t = 2$ mm

130.00031	L: 1200 mm
130.00032	L: 1500 mm
130.00033	L: 1800 mm

satin stainless steel, $t = 2,0$ mm

130.00034	L: 1200 mm
130.00035	L: 1500 mm
130.00036	L: 1800 mm



Art. No. track rail for Urban II and III

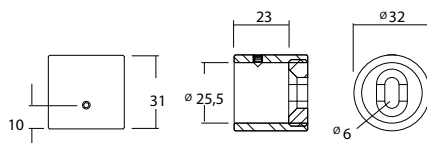
bright chrome, $t = 2$ mm

130.00037	L: 1200 mm
130.00038	L: 1500 mm
130.00039	L: 1800 mm

satin stainless steel, $t = 2,0$ mm

130.00040	L: 1200 mm
130.00041	L: 1500 mm
130.00042	L: 1800 mm

Rail mount, end face

**Art. No.****Wall mount**

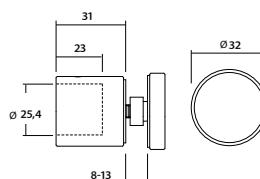
end face mounting of the track rail (ø 25 mm)

130.00050

bright chrome

130.00049

satin stainless steel

**Art. No.****Attachment for glass profil**

one-sided mounting of the track rail (ø 25 mm)

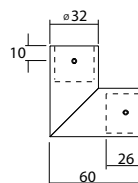
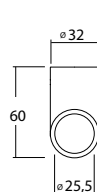
DTB2540CG

bright chrome

130.00057

satin stainless steel

Angle joint

**Art. No.****Angle joint**

for mounting two track rails at corners

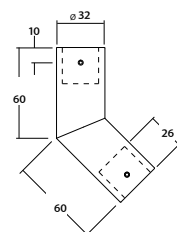
90° joint

130.00022

bright chrome

130.00010

satin stainless steel

**135° joint**

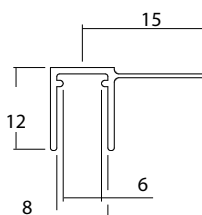
130.00021

bright chrome

130.00008

satin stainless steel

Profil seal

**Art. No.****Profil seal for glass edge mounting**

for noise reduction by partition walls or

reducing seepage of water in the shower

for glass door panel $t = 6 - 8$ mmfor glass door panel $t = 10 - 13$ mm

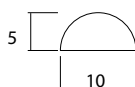
L: 210 mm

transparent PVC

DTB2840K

DTB2845K

Threshold guard

**Art. No.****Threshold guard**

size: 6/25 mm, L: 1000 mm

for floor use

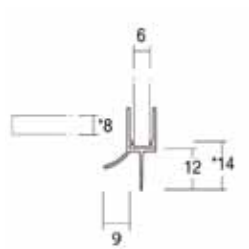
reduces water seepage

satin stainless steel (AISI 316L)

DTB2880K

■ Sealing profiles

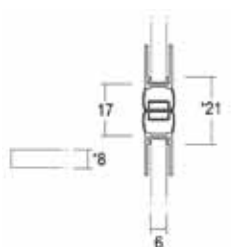
for shower cabinets with a glass thickness of 6-8 mm



Glass door seal 90° | glass – wall

Art. No.	length	glass thickness
DTB 2820K	2170 mm	6 - 8 mm

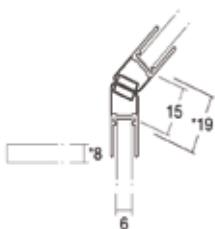
attachable profile
sealing towards the floor
water repellent



Magnetic seal 180° | glass - glass

Art. No.	length	glass thickness
DTB 2825K	2010 mm	6 - 8 mm

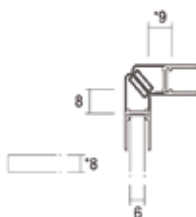
1 pair (left/right)
attachable profile
locks via magnetic strip
transparent PVC



Magnetic seal 135° | glass - glass

Art. No.	length	glass thickness
DTB 2830K	2010 mm	6 - 8 mm

1 pair (left/right)
attachable profile
locks via magnetic strip
transparent PVC



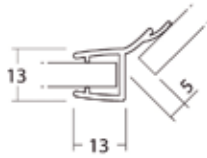
Magnetic seal 90° | glass - glass

Art. No.	length	glass thickness
DTB 2835K	2010 mm	6 - 8 mm

1 pair (left/right)
attachable profile
locks via magnetic strip
transparent PVC

■ Sealing profiles

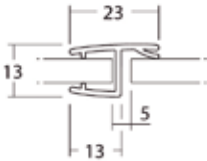
for shower cabinets with a glass thickness of 8-10 mm



Glass door seal 135 °| glass-glass

Art. No.	length	glasst hickness
DTB 2610K	2170 mm	8 - 10 mm

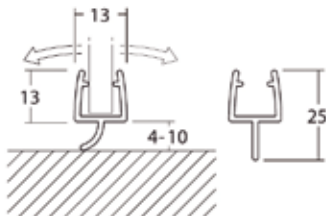
attachable profile
sealing for 135° connection



Glass door seal 180 °| glass-glass

Art. No.	length	glass thickness
DTB 2615K - 10 mm	2170 mm	8 Art. No. - 10 mm

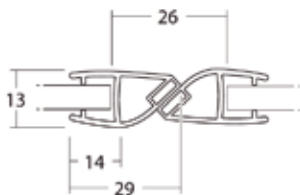
attachable profile
sealing for 180° connection
transparent PVC



Glass door seal | glass-bottom

Art. No.	length	glass thickness
DTB 2620K	2170 mm	8 - 10 mm

attachable profile
sealing to the floor

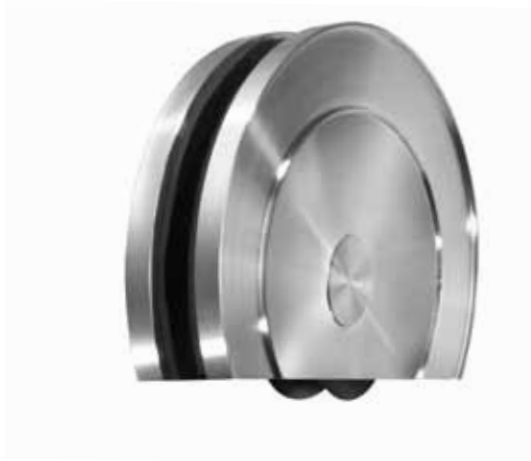


Magnetic glass door seal 180 °| glass-glass

Art. No.	length	glass thickness
DTB 2625K	2000 mm	8 - 10 mm

attachable profile
sealing for 180° connection
transparent PVC

■ Base bottom roller



Silent Glam

Silent Glam – design with a large range of colour options



Belans

Belans – the property fitting



Full Moon

A round look with height adjustment



Q-Box

Square roll – modern design combined with sophisticated technology

Set Silent Glam



Standard set for glass and wooden doors

Complete sets, for glass doors $t = 8 - 13 \text{ mm}$

Complete sets, for wooden doors $t = 38 - 45 \text{ mm}$, consisting of:

1 guide profile, aluminium stainless steel optic USO82EO for ceiling mountings

1 connection kit with pair of stoppers USO82 -S

1 runner profile without drilling holes, satin stainless steel, USO86.2EF length: see table

1 pair of bottom rolls, satin stainless steel, 112.00014 (glass)

1 pair of bottom rolls, satin stainless steel, 112.00015 (wood) with two decorative inlays USO280EF

1 Allen key (SW2,5), Z927

1 installation instruction

Glass set	track rail length	passage width
Set numbers	mm	mm
112.00120	1900	750 - 900
112.00121	2100	910 - 1000
112.00122	2350	1010 - 1120
112.00123	2600	1130 - 1250

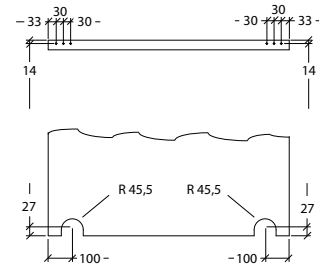
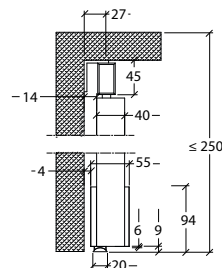
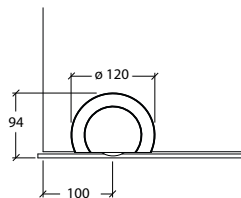
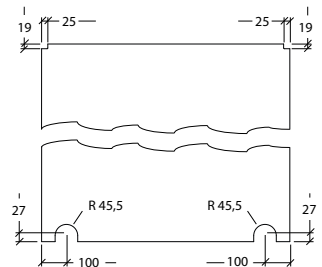
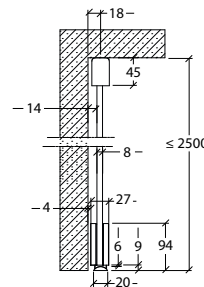
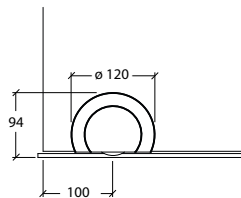
Wood set	track rail length	passage width
Set numbers	mm	mm
112.00124	1900	750 - 900
112.00125	2100	910 - 1000
112.00126	2350	1010 - 1120
112.00127	2600	1130 - 1250

Maximum door weight 150 kg

Please find planning guides and installation instruction at www.abp-beyerle.de

+ For special lengths of track rails, other individual components and accessories refer to page 68 - 72 adjustable height + 6 mm

Tested according to EN1527:2013



■ Inlays Silent Glam

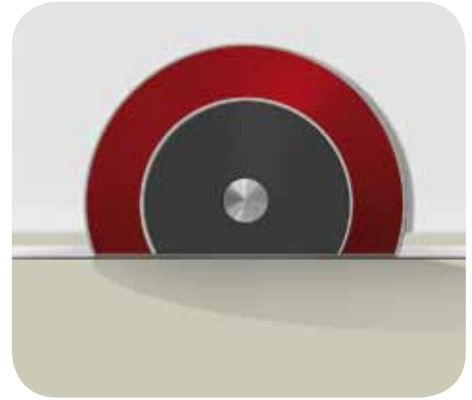
You have many design options in the choice of colours for inlays with our „Silent Glam“ floor roll. Choose from various materials for your very own personal design - to match your interior.



Base version
Center inlay - satin stainless steel,
USO280EF



Outer inlay -
white glass, USO281G003
Center inlay -
black glass, USO280G004



Customized design.



Outer inlay -
black glass, USO281G004
Center inlay -
satin stainless steel, USO280EF



Outer inlay -
black glass, USO281G004
Center inlay -
white glass, USO280G003



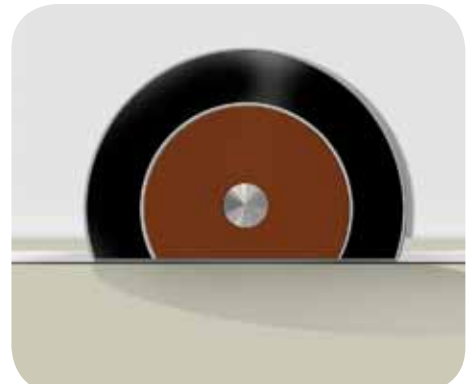
Customized design.



Customized design.



Customized design.



Customized design.

Set Belans



Standard set for glass and wooden doors

Complete sets, for glass doors $t = 8 - 13 \text{ mm}$

Complete sets, for wooden doors $t = 38 - 45 \text{ mm}$, consisting of:

- 1 guide profile, aluminium stainless steel optic USO82EO
- 1 connection kit with pair of stoppers USO82 -S
- 1 runner profile without drilling holes, satin stainless steel, USO86.2EF, length: see table
- 1 pair of bottom rolls, satin stainless steel, 112.00012 (glass)
- 1 pair of bottom rolls, satin stainless steel, 112.00013 (wood)
- 1 Allen key (SW2,5), Z927
- 1 installation instruction

Glass set	track rail length	passage width
Set numbers	mm	mm
112.00128	1900	750 - 900
112.00129	2100	910 - 1000
112.00130	2350	1010 - 1120
112.00131	2600	1130 - 1250
Wood set	track rail length	passage width
Set numbers	mm	mm
112.00132	1900	750 - 900
112.00133	2100	910 - 1000
112.00134	2350	1010 - 1120
112.00135	2600	1130 - 1250

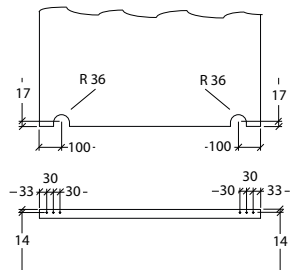
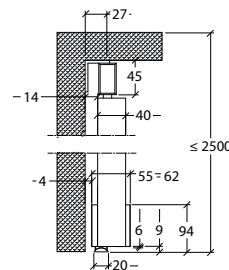
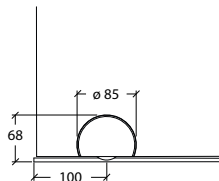
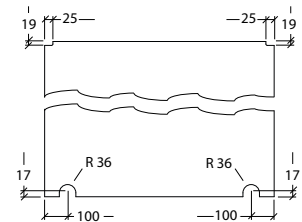
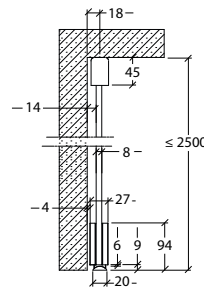
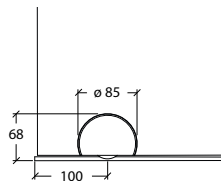
Maximum door weight 150 kg

Please find planning guides and installation instruction at www.abp-beyerle.de

- + For special lengths of track rails, other individual components and accessories refer to page 68-72

adjustable height + 1 / 2 / 3 mm

Tested according to EN1527:2013



■ Set Deeply Move



Set for glass and wooden doors

Complete sets, standard model

for glass doors $t = 8 - 13 \text{ mm}$

for wooden doors $t = 38 - 45 \text{ mm}$ consisting of:

1 guide profile, aluminium stainless steel optic USO82EO

1 stopper set USO82 -S

1 runner profile without drilling holes, satin stainless steel, USO86.2EF, length: see table

1 pair of bottom rolls, satin stainless steel, USO184EF (glass)

1 pair of bottom rolls, satin stainless steel, USO185EF (wood)

1 Allen key (SW 4,0), 65 20 00.0001

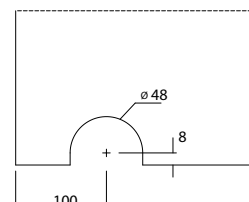
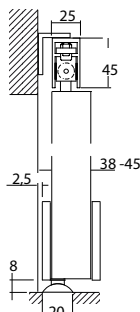
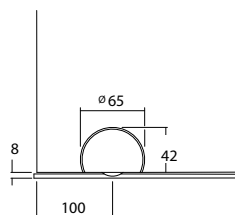
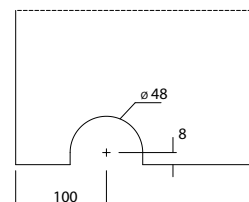
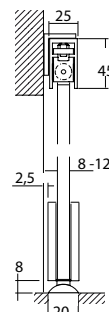
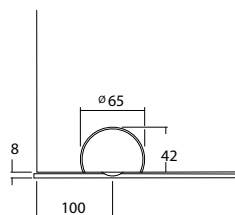
1 installation instruction

Glass set	track rail length	passage width
Set numbers	mm	mm
112.00136	1900	750 - 900
112.00137	2100	910 - 1000
112.00138	2350	1010 - 1120
112.00139	2600	1130 - 1250
Wood set	track rail length	passage width
Set numbers	mm	mm
112.00140	1900	750 - 900
112.00141	2100	910 - 1000
112.00142	2350	1010 - 1120
112.00143	2600	1130 - 1250

Maximum door weight 80 kg

Please find planning guides and installation instruction at www.abp-beyerle.de

+ For special lengths of track rails, other individual components and accessories refer to page 68-72



Set Full Moon



Set for glass and wooden doors

Complete sets, standard model

for glass doors $t = 8 - 13 \text{ mm}$

for wooden doors $t = 38 - 45 \text{ mm}$, consisting of:

1 guide profile, aluminium stainless steel optic USO82EO

1 connection kit with pair of stoppers USO82 -S

1 runner profile without drilling holes, satin stainless steel, USO86.2EF, length: see table

1 pair of bottom rolls, satin stainless steel, 112.00087 (glass)

1 pair of bottom rolls, satin stainless steel, 112.00088 (wood)

1 Allen key (SW 4,0), 65 20 00.0001

1 installation instruction

Glass set	track rail length	passage width
Set numbers	mm	mm
112.00155	1900	750 - 900
112.00156	2100	910 - 1000
112.00157	2350	1010 - 1120
112.00158	2600	1130 - 1250

Wood set	track rail length	passage width
Set numbers	mm	mm
112.00159	1900	750 - 900
112.00160	2100	910 - 1000
112.00161	2350	1010 - 1120
112.00162	2600	1130 - 1250

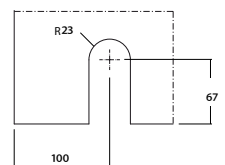
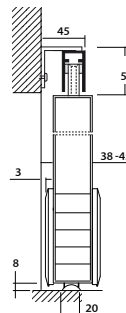
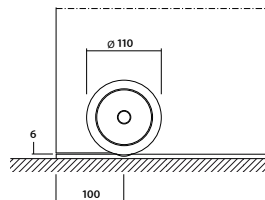
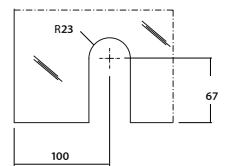
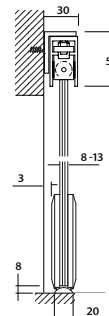
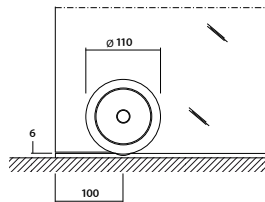
Maximum door weight 150 kg

adjustable height + 6 mm

Please find planning guides and installation instruction

at www.abp-beyerle.de

+ For special lengths of track rails, other individual components and accessories refer to page 68



Set Q-Box



Set Q-Box for glass and wooden doors

Complete sets, standard model

for glass doors $t = 8 - 13 \text{ mm}$

for wooden doors $t = 38 - 45 \text{ mm}$ consisting of:

1 guide profile, aluminium stainless steel optic USO82EO

1 connection kit with pair of stoppers USO82-S

1 runner profile without drilling holes, satin stainless steel, USO86.2EF, length: see table

1 pair of bottom rolls, satin stainless steel, 112.00115 (wood)

1 pair of bottom rolls, satin stainless steel, 112.00114 (glass)

1 Allen key (SW 4,0), 65 20 00.0001

1 installation instruction

Glass set	track rail length	passage width
Set numbers	mm	mm
112.00144	1900	750 - 900
112.00145	2100	910 - 1000
112.00146	2350	1010 - 1120
112.00147	2600	1130 - 1250

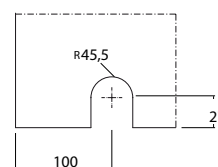
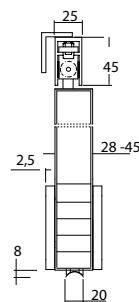
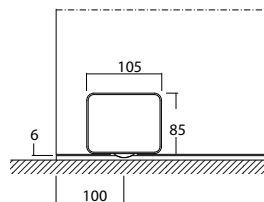
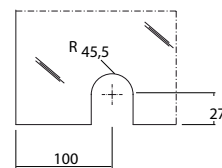
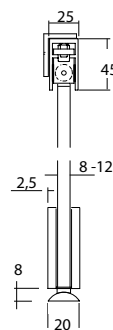
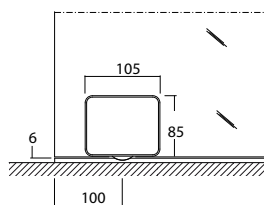
Wood set	track rail length	passage width
Set numbers	mm	mm
112.00148	1900	750 - 900
112.00149	2100	910 - 1000
112.00150	2350	1010 - 1120
112.00151	2600	1130 - 1250

Maximum door weight 150 kg

adjustable height + 6 mm

Please find planning guides and installation instruction at www.abp-beyerle.de

+ For special lengths of track rails, other individual components and accessories refer to page 68-72



Bottom roll Silent Glam

**Art. No.**

112.00014

112.00015

Bottom rolls (pair)with two decorative inlays
(stainless steel)

glass protection set,

1 Allen key

(SW 4,0), 65 20 00.0001

for glass doors $t = 8 - 13 \text{ mm}$ for wooden doors $t = 38 - 45 \text{ mm}$

adjustable height, + 6 mm

maximum door weight 150 kg

tested according to EN1527 : 2013

satin stainless steel (AISI 303)



Base version

Center inlay -

satin stainless steel, USO280EF

Outer inlay -

white glass, USO281G003

Center inlay -

black glass, USO280G004

Outer inlay -

black glass, USO281G004

Center inlay -

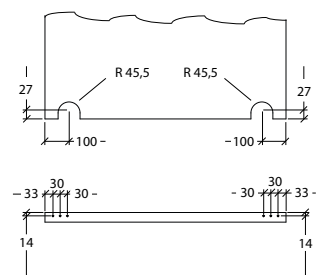
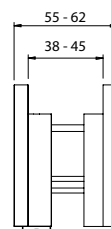
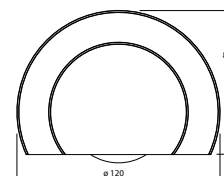
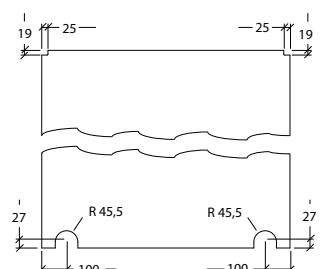
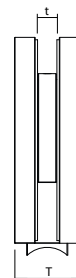
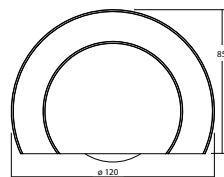
satin stainless steel, USO280EF

Outer inlay -

black glass, USO281G004

Center inlay -

white glass, USO280G003



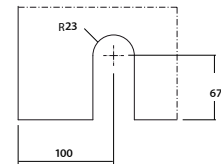
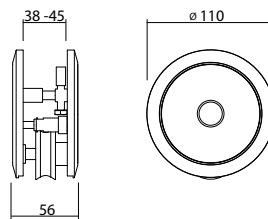
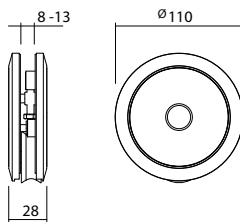
Full Moon



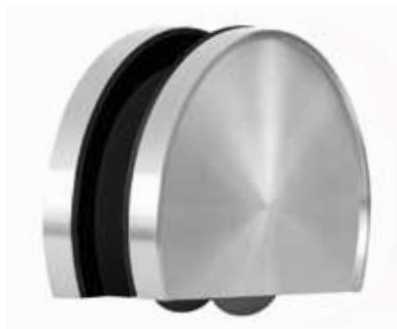
Art. No. **Pair of bottom rolls**
 glass protection set
 1 Allen key (SW 4,0), 65 20 00.001

112.00087 for glass door $t = 8 - 13$ mm
 112.00088 for wooden door $t = 38 - 45$ mm

adjustable height, + 6 mm
 maximum door weight 150 kg
 satin stainless steel (AISI 303)



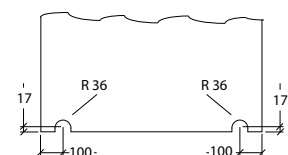
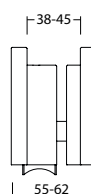
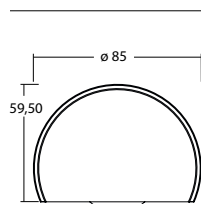
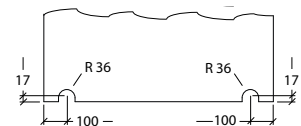
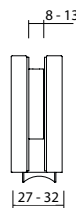
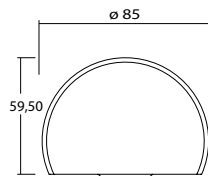
Belans



Art. No. **Pair of bottom rolls**
 glass protection set
 1 Allen key (SW2,5), Z927

112.00012 for glass door $t = 8 - 13$ mm
 112.00013 for wooden door $t = 38 - 45$ mm

adjustable height +1/+2/+3 mm
 maximum door weight 150 kg
 tested according to EN1527:2013
 satin stainless steel (AISI 303)



Q-Box

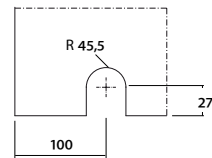
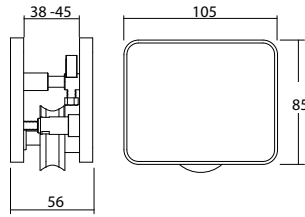
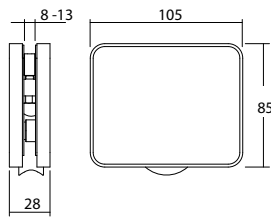


Art. No. **Pair of bottom rolls**
glass protection set
1 Allen key (SW 4,0), 65 20 00.0001

112.00114 for glass door $t = 8 - 13$ mm

112.00115 for wooden door $t = 38 - 45$ mm

adjustable height, + 6 mm
maximum door weight 150 kg
satin stainless steel (AISI 303)



Deeply Move

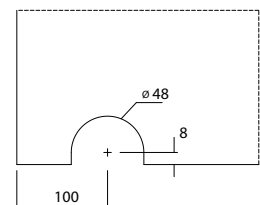
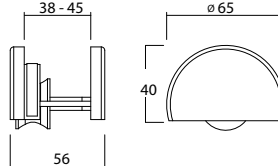
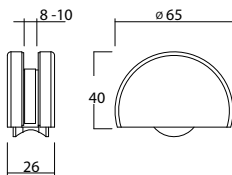


Art. No. **Pair of bottom rolls**
glass protection set
1 Allen key (SW 4,0), 65 20 00.0001

USO184EF for glass door $t = 8 - 13$ mm

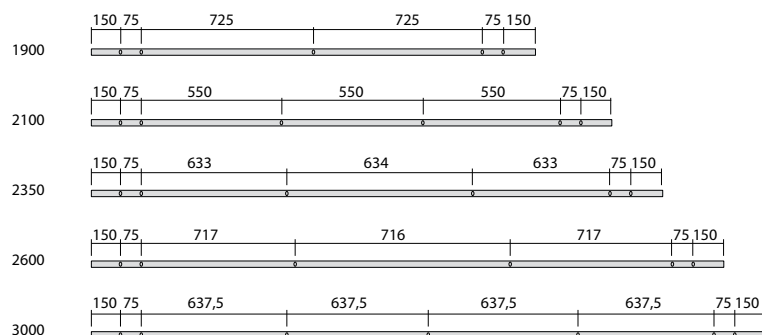
USO185EF for wooden door $t = 38 - 45$ mm

maximum door weight 80 kg
satin stainless steel (AISI 303)



Ceiling rails

Aluminium - stainless steel optic 45/25 mm



Drilling distance

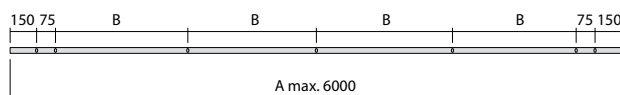
**Rail Econoline 45/25 mm, aluminium - stainless steel optic, for ceiling or wall brackets (wall angles required)
for single doors:**

Art. No.	profile length	passage width
USO82 - 1900EO	1900	750 - 900
USO82 - 2100EO	2100	901 - 1000
USO82 - 2350EO	2350	1001 - 1120
USO82 - 2600EO	2600	1121 - 1250
USO82 - 3000EO	3000	1401 - 1500

for two door panels:

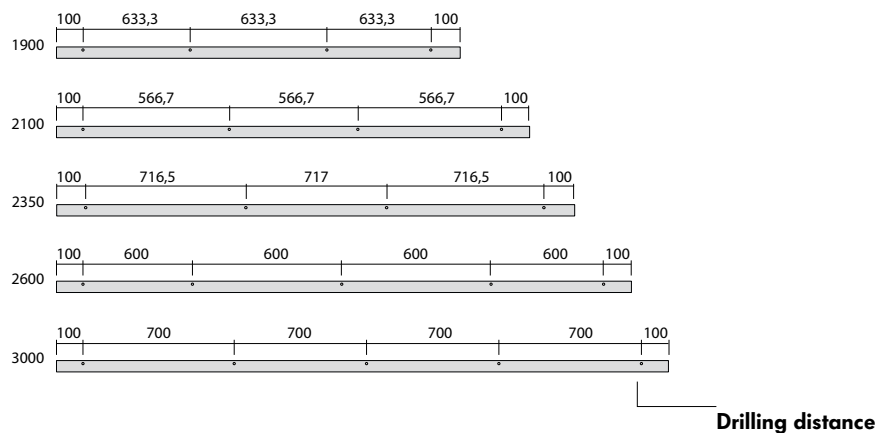
Art. No.	profile length	passage width
USO82 - 3750EO	3750	1500 - 1800

**Rail ø 25 mm, custom-made:
Please note distance B**



Ceiling rails

Aluminium - stainless steel optic 60/66 mm , two parts



Rail Comfortline 60/66 mm, aluminium - stainless steel optic, for ceiling or wall mount and for subsequent installation of suspended ceilings.

for single doors:

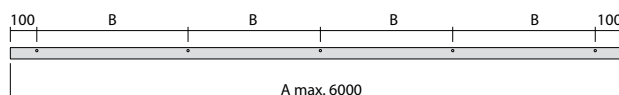
Art. No. ceiling fixture	Art. No. wall bracket	profile length	passage width
112.00007	112.00002	1900	750 - 900
112.00008	112.00003	2100	901 - 1000
112.00009	112.00004	2350	1001 - 1120
112.00010	112.00005	2600	1121 - 1250
112.00011	112.00045	3000	1251 - 1500

for two door panels:

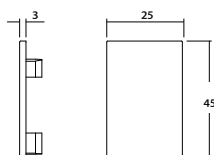
Art. No.	profile length	passage width
USO84-3750EO	3750	1500 - 1800

for two door panels, custom-made:

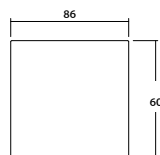
Please note distance B



End caps for rail

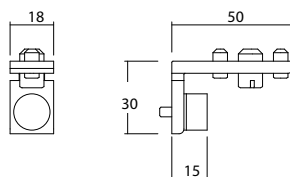


Art. No. **Pair of end caps**
for rail Econoline 45/25
 112.00154 for clipping, plastic

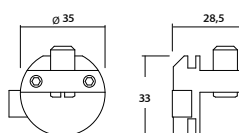


Art. No. **Pair of End caps**
for rail Econoline 60/66
 USO84-EK1 for clipping, plastic

Door stopper with connecting set

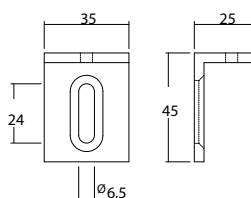


Art. No. **Door stopper with connection set**
for rail Econoline 45/25 (pair)
 112.00018 set for glass door $t = 8 - 13$ mm
 112-00019 set for wooden door $t = 38 - 45$ mm
 aluminium / rubber buffer



Art. No. **Door stopper (pair) with connection set**
for rail Comfortline 60/66
 112.00016 set for glass door $t = 8 - 13$ mm
 112.00017 set for wooden door $t = 38 - 45$ mm
 aluminium / rubber buffer

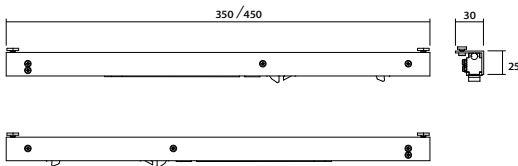
Wall mount



Art. No. **Mounting bracket for wall bracket**
 for mounting the ceiling track rail
 at the wall
 USO282 - 25EO for glass doors AL = 25 mm
 USO282 - 35EO for glass doors AL = 35 mm
 USO282 - 45EO for wooden doors, AL = 45 mm
 aluminium, stainless steel optic

Soft-Close mechanism

Soft-Close mechanism catches the door panel when it closes and guides it to a defined end position. This reduces the impact of the door panel and spring back is no longer possible. Please note the various Soft-Close mechanism, which are required for the different weight classes of door panel.



Art. No.	Soft-Close mechanism (pair) including activator for track rail Comfortline 60/66 plastic housing
112.00023	Soft-Close mechanism (left/right) for glass door $t = 8 - 12$ mm maximum door weight 80 kg L = 350 mm
112.00025	Soft-Close mechanism (left/right) for glass door $t = 8 - 12$ mm maximum door weight 80 to 120 kg L = 450 mm
112.00024	Soft-Close mechanism (left/right) for wooden door $t = 38 - 45$ mm maximum door weight 80 kg L = 350 mm
112.00026	Soft-Close mechanism (left/right) for wooden door $t = 38 - 45$ mm maximum door weight 120 kg L = 450 mm

Brush seal



Art. No.	Brush sealing for track rail Comfortline 60/66 mm profile length		
112.00027	L: 1900 mm	seal (pair)	for glass door $t = 8 - 10$ mm
112.00028	L: 2100 mm	seal (pair)	for glass door $t = 8 - 10$ mm
112.00029	L: 2350 mm	seal (pair)	for glass door $t = 8 - 10$ mm
112.00030	L: 2600 mm	seal (pair)	for glass door $t = 8 - 10$ mm
USO84-BD02	L: 3000 mm	seal (pair)	for glass door $t = 8 - 10$ mm
112.00033	L: 1900 mm	seal (pair)	for glass door $t = 11 - 13$ mm
112.00034	L: 2100 mm	seal (pair)	for glass door $t = 11 - 13$ mm
112.00035	L: 2350 mm	seal (pair)	for glass door $t = 11 - 13$ mm
112.00036	L: 2600 mm	seal (pair)	for glass door $t = 11 - 13$ mm
USO84-BD04	L: 3000 mm	seal (pair)	for glass door $t = 11 - 13$ mm
11200039	L: 1900 mm	seal (pair)	for wooden door
11200040	L: 2100 mm	seal (pair)	for wooden door
11200041	L: 2350 mm	seal (pair)	for wooden door
11200042	L: 2600 mm	seal (pair)	for wooden door
USO84-BD06	L: 3000 mm	seal (pair)	for wooden door

Bottom track rail

Bottom track rail 25/6mm, without drill holes, for gluing on the floor, satin stainless steel (AISI 304)

For single door panel:

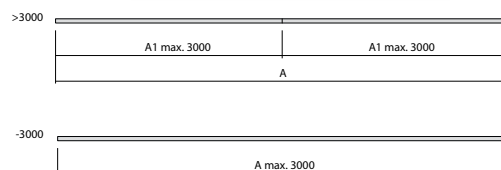
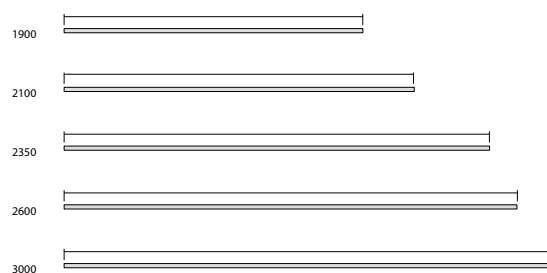
Art. No.	track rail length	passage width
USO86.2 - 1900EF	1900	750 - 900
USO86.2 - 2100EF	2100	901 - 1000
USO86.2 - 2350EF	2350	1001 - 1120
USO86.2 - 2600EF	2600	1121 - 1250
USO86.2 - 2800EF	2800	1251 - 1400
USO86.2 - 3000EF	3000	1401 - 1500

For two door panel, with coupling

Art. No.	track rail length	passage width
USO82 - 3750EF	3750	1500 - 1800

Custom made:

Please note the length of the bottom rail.



Bottom track rail 25/6mm, with drill holes for countersunk head screw, satin stainless steel (AISI 304)

For single door panel:

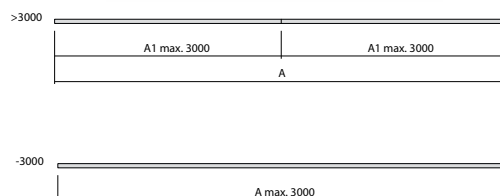
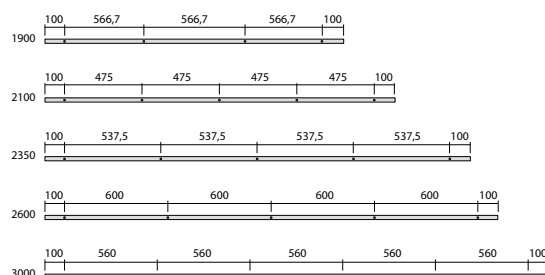
Art. No.	track rail length	passage width
USO86.1 - 1900EF	1900	750 - 900
USO86.1 - 2100EF	2100	901 - 1000
USO86.1 - 2350EF	2350	1001 - 1120
USO86.1 - 2600EF	2600	1121 - 1250
USO86.1 - 2800EF	2800	1251 - 1400
USO86.1 - 3000EF	3000	1401 - 1500

For two door panels, with coupling

USO82 - 3750EF	3750	1500 - 1800
----------------	------	-------------

Custom made:

Please note the length of the rail and distance between the drillholes.



■ AS 50



■ AS 50 for glass doors



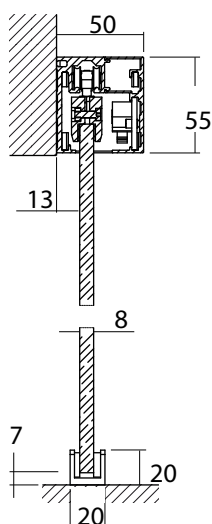
Complete sets, prepared for wall mount

for TSG-glass panel thickness $t = 8$ mm, consisting of:

- 1 track rail (wall mount)
- 2 trolley rollers, 111.00023 with clamping shoes, 111.00021
- 2 door stopper, 111.00022 2 end caps, 111.00020
- 1 bottom guide, 111.00026
- 1 installation material (screws)

Set numbers	Glass	profile rail length mm	passage width mm
111.00006		1900	750 - 900
111.00007		2100	910 - 1000
111.00008		2350	1010 - 1120
111.00009		2600	1130 - 1250

- ▼ No glass drilling
- tightening value of clamping shoes: 3 Nm
- Initial friction < 10 NM
- maximum door weight < 50 kg
- drilling distance refer to page 76
- supplementary items (soft close, trimming distances, etc.) refer to page 76 / 77



AS 50 for wooden doors



Complete sets, prepared for wall mount

for wood panel thickness $t = 38 - 45 \text{ mm}$, consisting of:

- 1 track rail (wall mount)
- 2 trolley rollers, 111.00023 with supportplate, 111.00024
- 2 door stopper, 111.00022 2 end caps, 111.00020
- 1 bottom guide, USH268K

Set numbers Wood	profile rail length mm	passage width mm
111.00010	1900	750 - 900
111.00011	2100	910 - 1000
111.00012	2350	1010 - 1120
111.00013	2600	1130 - 1250

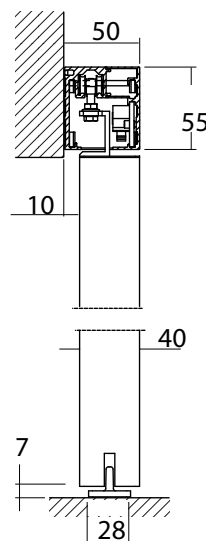
▼ Support plate for top hung for wood panel

Initial friction $< 10 \text{ Nm}$

Maximum door weight $< 50 \text{ kg}$

Drilling distance refer to page 76

Supplementary items (Soft Close, trimming distances, etc.) refer to page 76 / 77.

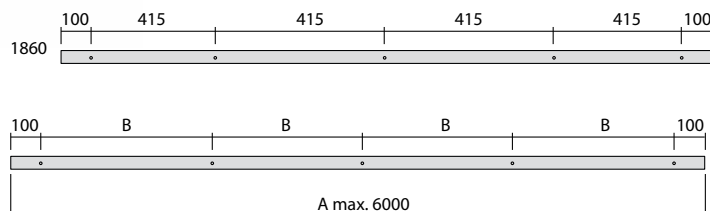


Profile track rail for AS50



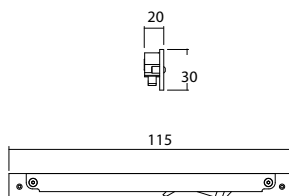
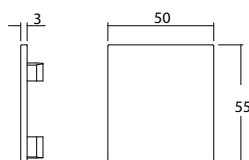
Profile track rail for ceiling and wall mount Aluminium, anodized

Artikel No:	length	passage width
111.00014	1900 mm	750 - 900
111.00015	2100 mm	910 - 1000
111.00016	2350 mm	1010 - 1120
111.00017	2600 mm	1130 - 1250
111.00018	3000 mm	for cutting
111.00019	6000 mm	for cutting



Components for AS50

Art. No. **End cap for track rail AS50 (pair)**
111.00020 to clip on, plastic



Art. No.: **Soft-Close mechanism (pair)**
Set including connector unit with activator
designated for profile AS50
maximum door weight : < 50 kg

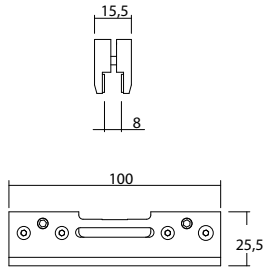
111.00025 Soft-Close mechanism (pair) for glass
111.00030 Soft-Close mechanism (pair) for wood

Components

for AS50

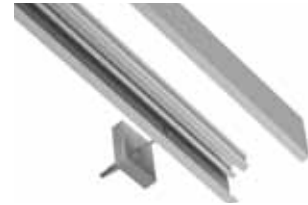
Art. No.:
111.00021

clamping shoes (pair)
for TSG – glass panel $t = 8$ mm
loading capacity up to 50 kg
attraction force 3 NM
zinc die-cast



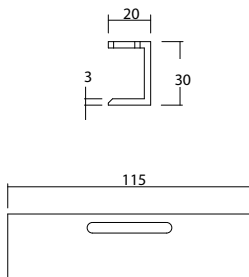
Art. Nr.:
111.00003

Trimming distances for door frames
5 (pcs.) Aluminium spacers compensate a distance of 15 mm in case of door frames



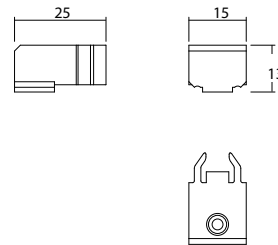
Art. No.:
111.00024

Support plate (pair)
for wooden door panels $t = 38 - 45$ mm
top fixture,
Aluminium



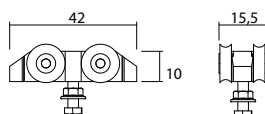
Art. No.:
111.00022

Door stopper (pair)
for profile AS50,
plastic



Art. No.:
111.00023

Trolley roller (pair)
for clamping shoes 111.00021 or
support plate 111.00024
for use with profile AS50
loading capacity up to 50 kg
plastic



Art. No.:

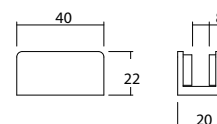
Bottom guides
Aluminium anodized
with felt insert
for TSG – door panels $t = 8$ mm

111.00026

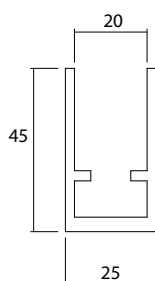
USH268K

for door panel thickness $t = 40$ mm
plastic

▼ panel channel for bottom guides 7 x 17 mm

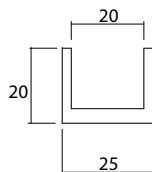


Profiles and Seals

**Ar. Nr.:****Profile 45 / 25**

with attachment holes
 rubber seal (black) USO83, available
 as an accessory
 for glass door panels $t = 10$ or 12 mm
 Aluminium anodized, stainless steel optic

USO82 - 2100EO L: 2100mm
 USO82 - 2600EO L: 2600mm
 USO82 - 3000EO L: 3000mm

**Art. No.:****Profil 20 / 25 / 20**

rubber seal (black)
 111.00031 / 111.00032 available
 as an accessory
 for glass door panels $t = 10$ or 12 mm
 Aluminium anodized, stainless steel optic

111.00027 L: 2000 mm
 111.00028 L: 2500 mm
 111.00029 L: 3000 mm

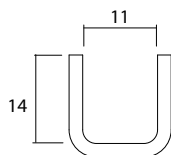
**Art. No.:****Rubber seal (black)**

For 10/12 mm Glass

for use with track rail **45 / 25**
 USO83 - 10 glass door panel = 10mm
 USO83 - 12 glass door panel = 12 mm

for use with track rail **20 / 25**
 111.00031 glass door panel = 10mm
 111.00032 glass door panel = 12 mm

Profile, stain stainless steel

**Art. No.:****Profil 15 / 15 mm**

satin stainless steel (AISI 304)

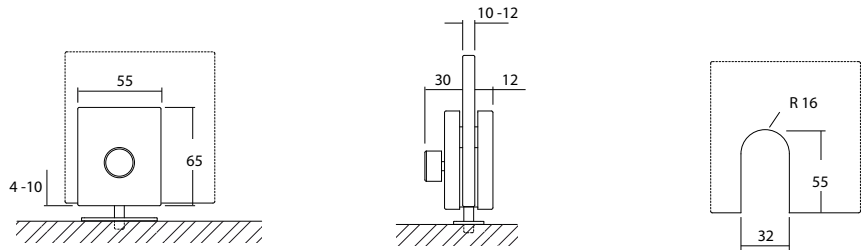
Length
 130.00066 2010 mm
 130.00067 2500 mm
 130.00068 3000 mm

Bottom door lock



Art. No. **Bottom door lock**
 turn knob, singlepoint lock
 with strike plate
 measure: 65 × 55 mm
 for glass door panels $t = 8-12$ mm

120.00021 satin stainless steel
 120-00022 polished stainless steel



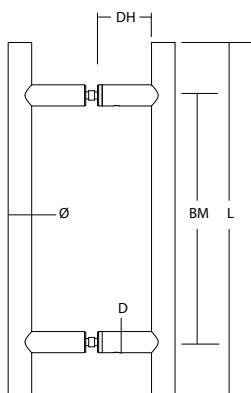
Latch



Art. No. **Latch for one side door panel blocking**
 120.00023 for wood doors
 material: steel, brushed nickel plated

Pull handles

For more information please ask for
our special Pull handle brochure
or look on www.abp-beyerle.de



Impero-EconoLine

For glass doors $t = 8 - 12$ mm, handle bar tubular $\varnothing 25$ mm

Art. No.	L	BM	D
140.00 700	300	200	22
140.00 701	400	300	22
140.00 702	500	350	22
140.00 703	600	400	22
140.00 704	800	600	22

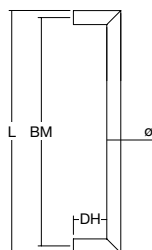
material: satin stainless steel (AISI 304)

supports D = stainless steel, solid

passage height DH = 45 mm

includes fastener set

welded endcaps



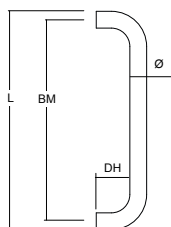
Beluga

handle bar $\varnothing 20$ mm, solid, welded

Art. No. Single handle	Art. No. in pairs	\varnothing	L	BM
SG300-20-EF	SG300-20-EF-B	20	300	280
SG400-20-EF	SG400-20-EF-B	20	400	380
SG500-20-EF	SG500-20-EF-B	20	500	480
SG600-20-EF	SG600-20-EF-B	20	600	580
SG900-20-EF	SG900-20-EF-B	20	900	880
SG1200-20-EF	SG1200-20-EF-B	20	1200	1180

passage height DH = 45 mm

tubular thickness $t = 2$ mm, satin stainless steel (AISI 304)



Thalis

handle bar $\varnothing 20$ mm

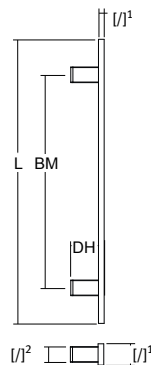
Art. No. Single handle	Art. No. in pairs	\varnothing	L	BM
140.00572	140.00573	20	320	300

passage height DH = 45 mm

tubular thickness $t = 2$ mm, satin stainless steel (AISI 304)

Unique design style based on small bend radius.

Pull handles



Level

handle bar [/] 30/8 mm, solid

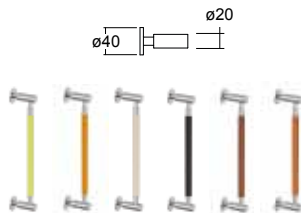
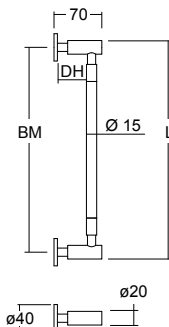
Art. No. Single handle	Art. No. in pairs	handle bar [/]1 in pairs	L	BM
140.00612	140.00613	8/30	400	300
140.00614	140.00615	8/30	600	500
140.00616	140.00617	8/30	900	600
140.00618	140.00619	8/30	1200	900

passage height DH = 45 mm

supports [/]2 = 22 x 22 mm,

satin stainless steel (AISI 303), solid

handle bar: satin stainless steel (AISI 304), tubular



Beetle / leather

satin stainless steel, solid, leather classic Nappa,

handle bar ø 15 mm

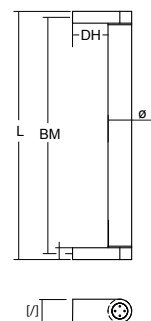
Art. No. Single handle	Art. No. in pairs	ø	L	BM	color
140.00660	140.00661	15	300	280	weiß
140.00662	140.00663	15	300	280	schwarz
140.00664	140.00665	15	300	280	braun
140.00666	140.00667	15	300	280	cognac
140.00668	140.00669	15	300	280	schiefer
140.00670	140.00671	15	300	280	lemon
140.00672	140.00689	15	300	280	orange

passage height DH = 47 mm

supports ø = 20 mm

roses d = 40 mm

satin stainless steel (AISI 303)



SCI / leather

Leather: schoko, double stitch, handle bar ø 30 mm

Art. No. Single handle	Art. No. in pairs	L	BM
satin stainless steel (AISI 304)			
SC315-30-EF-L039	SC315-30-EF-B-L039	315	300
polished stainless steel (AISI 304)			
SC315-30-EP-L039	SC315-30-EP-B-L039	315	300

leather: black, plain, handle bar ø 30 mm

Art. No. Single handle	Art. No. in pairs	L	BM
satin stainless steel (AISI 303)			
SC315-30-EF-L042	SC315-30-EF-B-L042	315	300
polished stainless steel (AISI 304)			
SC315-30-EP-L042	SC315-30-EP-B-L042	315	300

passage height DH = 45 mm,

supports [/] = 30 x 15 mm

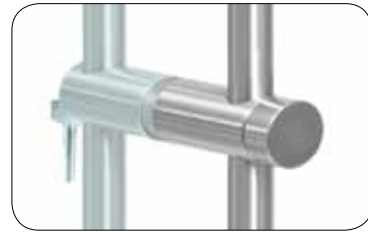
stainless steel (AISI 303) satin or polished

■ Locking Pull System

In certain construction environments, like in store construction or in open office areas, it is an advantage to be able to lock the doors. You do not need to sacrifice quality standards. We offer many alternatives in size and functionality, so you will be able to make your object safe in an efficient but at the same time inobtrusive way.



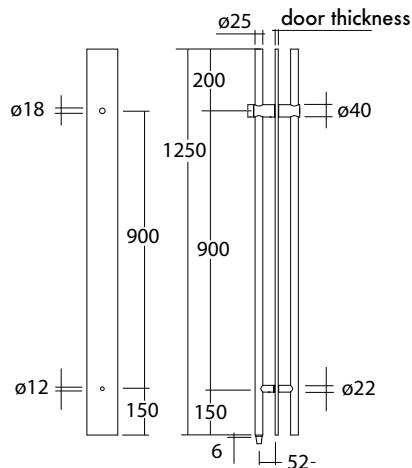
Turning Knob Inside/ Emergency Release Outside



Turning Knob Inside /
key operated lock outside



Door Pull Pair – Half Height -
turn knob inside;
emergency release outside



For more information please ask for
our special Pull handle brochure
or look on www.abp-beyerle.de

Glass door types: 8 - 15 mm:

Art. No.	L	BM	D
SIA1250DN- 25 -EF-B	1250	900	25

Door types wood or hollow metal: 38 -45mm:

Art. No.	L	BM	D
SIH1250DN- 25 -EF-B	1250	900	25

Dead Bolt down
Delivery without ground sleeve
Material: Satin stainless steel (AISI 303/304)

Ground sleeve



Art..Nr.	D:	d:	T:
SIB-0004 -EF	45	22	32

material: satin stainless steel/alu

Ground sleeve with dust proof

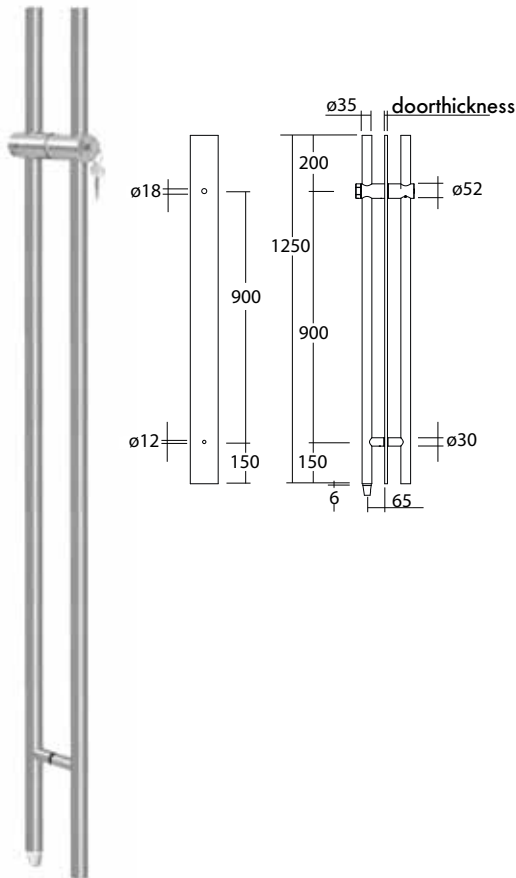


Art..Nr.	D:	d:	T:
SIB-0005 -EF	45	25	36

material: satin stainless steel/alu

Locking Pull System

Door Pull Pair – Half Height -
turn knob inside,
cylinder lock outside



Glass door types: 8 - 15 mm:

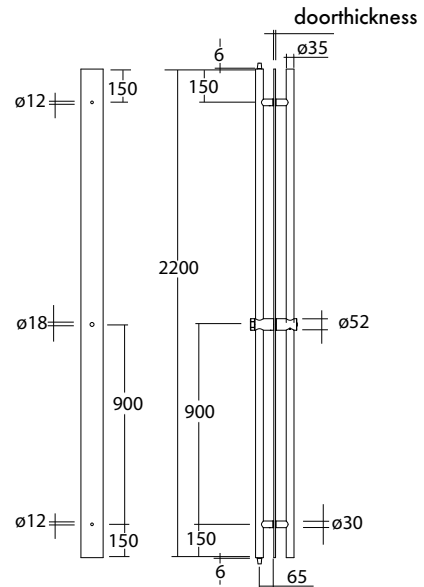
Art. No.	L	BM	D
SIA1250DS- 35 -EF-B	1250	900	35

Door types wood or hollow metal: 38 - 45mm:

Art. No.	L	BM	D
SIH1250DS- 35 -EF-B	1250	900	35

dead bolt down
incl. profile cylinder lock
delivery without ground sleeve
material: satin stainless steel (AISI 303/304)

Door Pull Pair – Full Height -
turn knob inside;
profilcylinder lock outside



Glass door types: 8 - 15 mm:

fixed Length:

Art. No.	L	BM	D
SIA2200DS- 35 -EF-B	2200	900/1000	35

custom length:

Art. No.	L	BM	D
SIAXXDS- 35 -EF-B	on demand	on demand	35

door types wood or hollow metal: 38 - 45mm:

Art. No.	L	BM	D
SIH2200DS- 35 -EF-B	2200	900/1000	35

Fixed Length:

custom length:

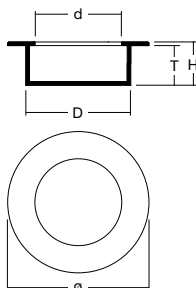
Art. No.	L	BM	D
SIHXXDS- 35 -EF-B	on demand	on demand	35

dead Bolt down and top
incl. profilcylinder lock
delivery without ground sleeve
material: Satin stainless steel (AISI 303/304)

Please submit the technical drawing
including customer length.

Flush Pulls

For more information please ask for our special Pull handle brochure or look on www.abp-beyerle.de



Flush Pull Rondo

Drill hole depth $T = 4$ mm, wide border

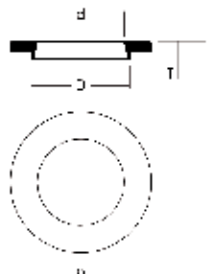
Art. No.	\varnothing	d	D	T	H
GM48-4-EF	48	$\varnothing 25$	$\varnothing 30$	4	5,5
GM70-4-EF	70	$\varnothing 45$	$\varnothing 50$	4	6
GM90-4-EF	90	$\varnothing 65$	$\varnothing 70$	4	6
GM125-4-EF	125	$\varnothing 100$	$\varnothing 106$	4	6

Drill hole depth $T = 14$ mm, wide border

Art. No.	\varnothing	d	D	T	H
GM48-14-EF	48	$\varnothing 25$	$\varnothing 30$	14	15,5
GM70-14-EF	70	$\varnothing 45$	$\varnothing 50$	14	16
GM90-14-EF	90	$\varnothing 65$	$\varnothing 70$	14	16
GM125-14-EF	125	$\varnothing 100$	$\varnothing 106$	14	16

Flush pull for glass and wooden doors, wide border
Satin stainless steel (AISI 303)

▼ Turned from solid stainless steel



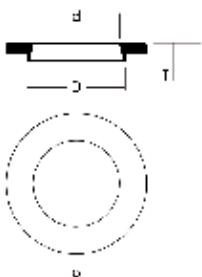
Flush Pull Diskus

Drill hole depth $T = 3,5$ mm, wide border

Art. No.	\varnothing	d	D	T	H
GO70-4-EF	70	$\varnothing 42$	$\varnothing 49$	3,5	9,5
GO90-4-EF	90	$\varnothing 62$	$\varnothing 69$	3,5	9,5

for glass doors, drill hole depth $T = 3,5$ mm
satin stainless steel (AISI 303)

▼ Turned from solid stainless steel

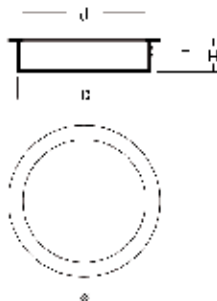


Flush Pull Diskus Aluminium

Drill hole depth $T = 3,5$ mm

Art. No.	\varnothing	d	D	T	H
GO50-4-AE	50	$\varnothing 42$	$\varnothing 49$	3,5	9,5

for glass and wooden doors
Aluminium natural anodized



Flush Pull Kambium for wooden doors

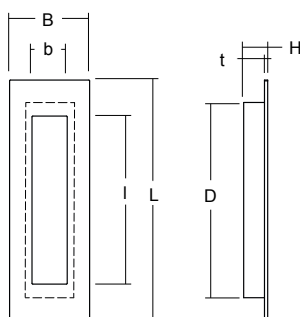
Drill hole depth $T = 14$ mm

Art. No.	\varnothing	d	D	T	H
GN50-14-EF	50	$\varnothing 36$	$\varnothing 42$	14	15
GN75-14-EF	75	$\varnothing 61$	$\varnothing 67$	14	15

Push-in pull ($\varnothing 68,3$ mm)
Satin stainless steel (AISI 303)

▼ Turned from solid stainless steel

Flush Pulls

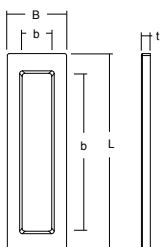


Flush Pull Rectus

Drill hole depth $t = 13 \text{ mm}$

Art. No.	L/B	b	D	t	H
GR150-13EF	150x50	105x22	122x30	13	15

Rectangle Flush pull for wooden doors
Satin stainless steel (AISI 303/304)



Flush Pull Barno, for adhesion Aluminium (EV1) anodized

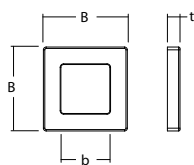
Art. No.	L	B	b
140.00677	110	60	30x70
140.00678	200	60	30x160

Flush Pull Barno, for adhesion Stainless steel optic

Art. No.	L	B	Innen
140.00679	110	60	30x70
140.00680	200	60	30x160

▼ Incl. special adhesive tape.
Clean and degrease the door panel before adhesion.

▼ $t = 9,0 \text{ mm}$

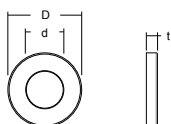


Flush Pull Oxa for adhesion Aluminium (EV1) anodized

Art. No.	L	B	b
140.00681	60	60/60	35/35

▼ Incl. special adhesive tape.
Clean and degrease the door panel before adhesion.

▼ $t = 9,0 \text{ mm}$

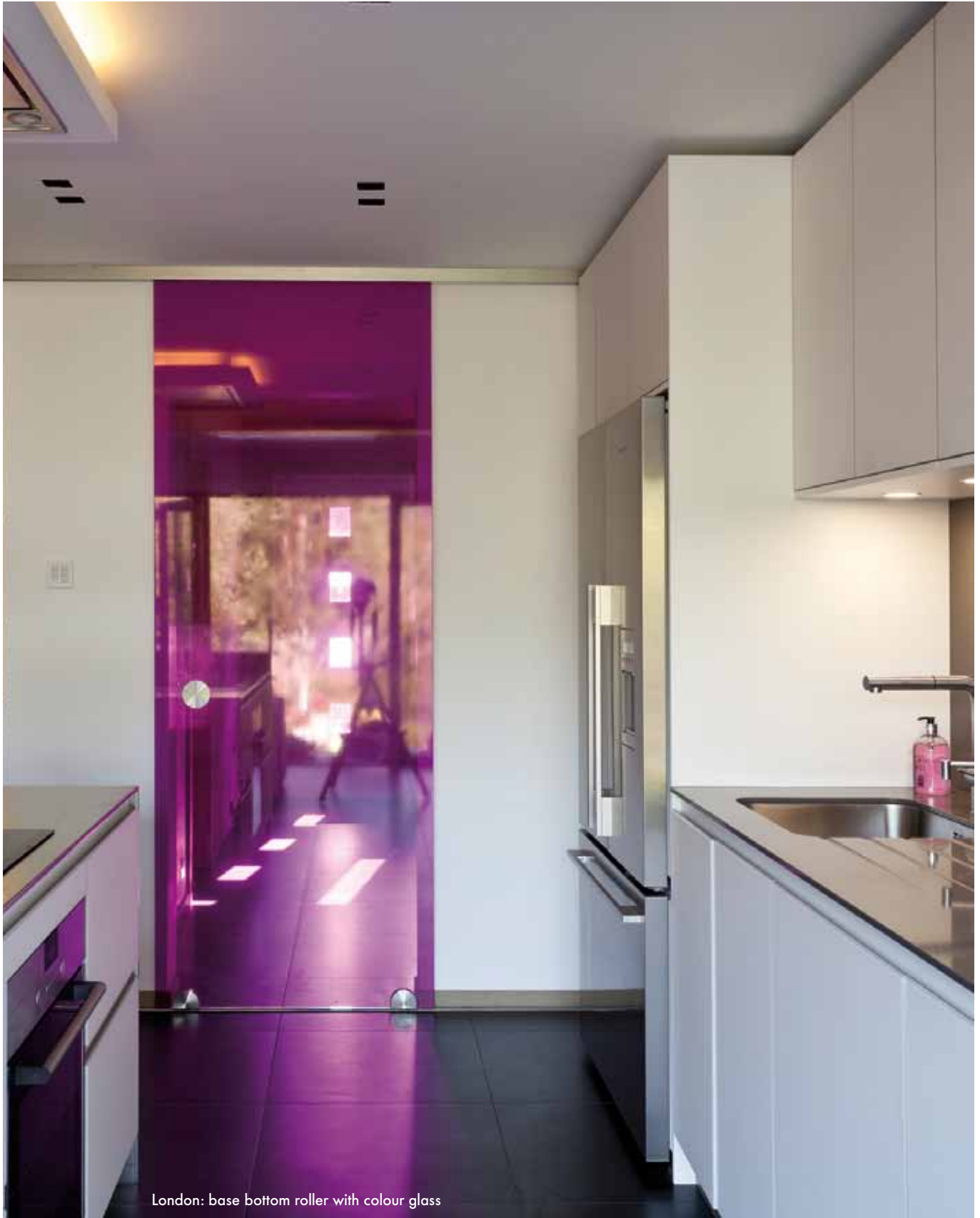


Flush Pull Oxi for adhesion Aluminium (EV1) anodized

Art. No.	D	d
140.00682	65	40

▼ Incl. special adhesive tape.
Clean and degrease the door panel before adhesion.

▼ $t = 9,0 \text{ mm}$



London: base bottom roller with colour glass

1. Scope of application

These general terms and conditions apply to all our offers, quotations and contracts on supplies, deliveries and services even if they are not explicitly referenced later during business relations. The following conditions only apply to consumers insofar as consumer protection regulations are not contradictory. In such cases, the legal regulations apply to consumers. Deviating agreements or the ordering party's own terms and conditions are only binding for us after our explicit confirmation in writing. The reservation of ownership in Clause 10 cannot be limited in any cases.

2. Prices

2.1. The basis is the current price list. The prices apply per meter or piece plus the added value tax applicable on the day of delivery. Deliveries are made in packing Dimension only.

2.2. The agreed remuneration must always be paid. If the price at the time of the rendering of the service or performance increases due to a change in the market price or through an increase by the third parties involved in the service or performance, the increased price applies. If that is 20 % or more above the agreed price, the customer has the right to withdraw from the contract. This right must be asserted promptly after the increased price has been communicated. Additional claims are excluded.

2.3. Freight and packing costs will be additionally charged to all customers. The delivery is freight collect at the cost of the recipient. Orders that are not bound to deadlines will be shipped as inexpensively as possible.

3. Small order surcharge

For reasons of economic viability, orders up to € 50 -- net goods value can only be executed against a processing fee of € 10 -- lump sum net.

4. Dimensions and weights

Dimension and weight specifications are made subject to slight technically related non-compliances.

5. Offers/quotations/orders

Order acceptance is accepted exclusively through our written order confirmation. Oral agreements are non-binding. We are bound to our offer for two weeks from date of receipt. For call orders, if no other agreement has been made an acceptance deadline of twelve months from the date of the order confirmation applies. If there is no acceptance by then, we are entitled to demand the outlays of the sales price from the customer and to organize the deliveries based on our discretion. The alternative according to § 326 BGB, to withdraw from the contract or to demand indemnification due to failure to perform remains unaffected.

6. Delivery deadlines, partial performance, delivery quantities for special parts

Delivery dates and delivery deadlines apply according to the order confirmations. They are considered maintained if the goods depart from our factory on the agreed day or the day of the deadline expiration. The delivery deadline starts with the date on the order confirmation. If a collaborative obligation by the customer is necessary, the deadline does not start before the customer has met this obligation. We are also entitled to partial deliveries to a reasonable degree. Indemnification for delivery delays for which we are not responsible is excluded. That especially applies to unpredictable stoppages, malfunctions in the conveyance ways, a lack of manufacturing material and energy, strikes and/or lockouts. If the delivery dates or deadlines exceed more than two weeks for these reasons, both parties are entitled to withdraw from the contract with a written declaration. Apart from that, liability is limited to criminal intent and gross negligence. The disclaimer of liability only applies to minor negligence for private consumers. If assertion of the customer rights requires setting a reasonable grace period, it is to be fixed as at least two weeks. Non-compliances in the number of pieces and weight of up to 10% of the order amount are permitted for customer-specific parts.

7. Risk of conveyance

All deliveries are made at the customer's risk as soon as the goods are handed over to the carrier, the haulage contractor or any other person or establishment for implementing delivery. That also applies if the goods are shipped in our company-own vehicles. Transporting the goods within our company location is also considered a destination purchase at the above-mentioned terms.

8. Notification of defects, warranty, breach of duty, statute of limitations

8.1 Warranty

Obvious defects must be reported within eight days after receipt of the goods. The deadline is six months from the receipt of the goods for latent defects. In both cases, notification of the defect is to be in writing.

The faultiness of one part does not entitle to objection to the entire delivery.

Defective goods will be replaced upon return or repaired if, especially from the customer's point of view that is acceptable in terms of time. The customer is entitled to reduce the remuneration or to demand cancellation of the contract only after two failed attempts at repair or in if a replacement delivery is impossible.

8.2. Breach of duty

Our liability for contractual breaches of duty and from offences is limited to intent and gross negligence as well as to the replacement of typical damages. That does not apply to the customer's life, body or health, to demands due to breach of cardinal obligations and compensation for damage caused by delay (§ 286 BGB (German Civil Code)). We are liable for any degree of blame in this sense. If this involves damage that does not result from harm to the customer's life, body or health, however, we are only liable for typical damages.

8.3. Statute of limitations

The warranty is one year starting with the hand-over of the goods or with manufacture in the factory. Compensatory claims by the customer due to a defect expire one year after handing over the goods or manufacture in the factory. That does not apply if we have acted culpably or in cases of injury to life, body or health.

Insofar as a liability for damages that is not based on the injury of the life, body or health of the customer is not excluded for minor negligence, such claims expire within one year, starting with the origination of the claim.

9. Payment conditions

The invoice amounts are due immediately after the invoice is written and are to be paid latest 30 days after delivery. After the above-mentioned deadline has passed, the customer is in default of payment.

A cash discount of 2% is granted for payments made within ten days of the invoice date. The latter does not apply to payments made by promissory notes or checks.

In cases of default, without requiring evidence, interest of 8 percentage points over the base interest rate applicable at that time is due from companies and 5 percentage points from consumers. Lump sum costs of €2.50 each will be charged for every reminder. If the payment conditions are not complied with, especially after agreed payment installments, all demands immediately become due. The same applies to check and promissory note protests, applications for insolvency proceedings and all other circumstances that are suggestive of a decline in the customer's assets. The above interest regulation applies from the time of default. Checks and promissory notes are accepted only on account of performance; promissory notes only after prior agreement and without any guarantee for correct submission and protest. Discount and note charges are charged to the customer and are due immediately.

10. Retention of title

10.1. In contacts with consumers, we reserve the title to the goods until complete payment of the sales price has been made.

10.2. If the customer is a company, we reserve the title to the goods until all demands against the ordering party from the business relation have been satisfied even if the concrete goods have already been paid.

10.3. If the customer is a company, it - in the case of resale/refinement of the reserved goods - already now cedes to us as security all demands and other claims against its customers, which arise through the named transactions including ancillary cost, until fulfillment of all our demands. In case of refinement, its alteration or its connection with other objects, we immediately acquire ownership of the manufactured object, namely in the proportion of the title-reserved goods at the value of the new object at the time of processing or refinement. Upon demand, the customer is obligated to name third party debtors and to notify about the conveyance

The right of the customer to sell or process the goods in normal business dealings expires with cessation of payments, application for or opening of bankruptcy proceedings as well as an insolvency plan proceeding.

10.4. Upon access of third parties, especially attachment of the reserved goods, the customer is to immediately inform and transfer the documents needed for an intervention; that also applies to impairments of other kinds. Independent of that, the customer is to notify the third party in advance about the extant rights on the goods. If the customer is a company, it bears all costs for replacement of the goods as well as an intervention if the third party is not in a position to reimburse these.

10.5. If our demand of the value of security surpasses our claims against the customer by more than 20 %, upon its demand and based on our choice we can release the securities we are entitled to the corresponding scope.

11. Samples and drawings, patents

The supplier retains the property rights and copyrights to images, drawings, sketches and other documents and samples. The documents are to be returned immediately upon request and must not be passed on to their parties without the supplier's consent. Sample items are to be returned within two months; otherwise the supplier is entitled to invoice them. Special versions of sample items will only be delivered against invoice.

12. Product liability

If the delivered goods were not manufactured by the seller itself, all demands involving the product liability are passed on to the manufacturer. We would be glad to broker between both parties in such cases.

13. Data privacy

The customer consents to our processing of his/her/its private information as required by the contract relationship.

14. Place of fulfillment, legal venue

If the buyer is a qualified merchant, legal public entity or special fund under public law, it is agreed that the place of fulfillment and legal venue for all disputes between the parties resulting from the contract relationship is the headquarters of ABP-Beyerle GmbH.

15. Legal validity

If a stipulation in these terms and conditions or a clause in the frame of other agreements are or become ineffective, the validity of the rest of the clauses or agreements is not affected. Instead of the ineffective clauses or agreements, suitable regulations are considered agreed to that come closest to the purpose of the contract. The same applies if gaps needing to be complemented become apparent.

16. Choice of law

The laws of the Federal Republic of Germany apply to the legal relations between our customers and us. They do not apply if specific consumer regulations in the country of nationality (permanent residence) of the customer are more favorable (Art. 29 EGBGB (Introductory Act to the Civil Code)).

The use of the United Nations Convention on Contracts is excluded.

ABP-Beyerle GmbH

Im Schollengarten 24 b | D- 76646 Bruchsal
Tel. +49 (0) 7257/91 27 -0 | Fax +49 (0) 7257/91 27 -29
info@abp-beyerle.de | www.abp-beyerle.de

